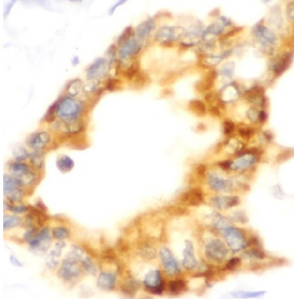


Sodium-Dependent Phosphate Transport Protein 2B (SLC34A2) Antibody

Catalogue No.: abx217038



IHC-P analysis of human pancreas tissue, using SLC34A2 antibody (1/100 dilution).

Sodium-Dependent Phosphate Transport Protein 2B (SLC34A2) Antibody is a Rabbit Polyclonal antibody for the detection of SLC34A2.

May be involved in actively transporting phosphate into cells via Na (+) cotransport. It may be the main phosphate transport protein in the intestinal brush border membrane. May have a role in the synthesis of surfactant in lungs' alveoli.

Target:	Sodium-Dependent Phosphate Transport Protein 2B (SLC34A2)
Clonality:	Polyclonal
Reactivity:	Human
Tested Applications:	ELISA, IHC
Host:	Rabbit
Recommended dilutions:	IHC: 1/20 - 1/200. Optimal dilutions/concentrations should be determined by the end user.
Conjugation:	Unconjugated
Immunogen:	solute carrier family 34(sodium phosphate), member 2
Isotype:	IgG
Form:	Liquid
Purity:	≥ 95% (SDS-PAGE)
Purification:	Purified by immunogen affinity chromatography.

Datasheet

Version: 2.0.0
Revision date: 25 Sep 2024



Storage:	Aliquot and store at -20°C. Avoid repeated freeze/thaw cycles.
Validity:	12 months.
UniProt Primary AC:	O95436 (UniProt , ExpASY)
Gene Symbol:	SLC34A2
GeneID:	10568
OMIM:	265100
HGNC:	11020
KEGG:	hsa:10568
Ensembl:	ENSG00000157765
String:	9606.ENSP00000371483
Buffer:	PBS, pH 7.3, with 0.02% sodium azide and 50% glycerol.
Concentration:	2 mg/ml
Note:	This product is for research use only.

For Reference Only