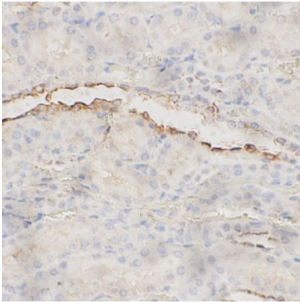


## Band 3 Anion Transport Protein / CD233 (SLC4A1) Antibody

Catalogue No.: abx218630



IHC-P analysis of Rat kidney tissue, using SLC4A1 antibody (1/200 dilution).

Band 3 Anion Transport Protein / CD233 (SLC4A1) Antibody is a Rabbit Polyclonal antibody for the detection of SLC4A1.

<b>Target:</b>	Band 3 Anion Transport Protein / CD233 (SLC4A1)
<b>Clonality:</b>	Polyclonal
<b>Reactivity:</b>	Rat
<b>Tested Applications:</b>	ELISA, IHC
<b>Host:</b>	Rabbit
<b>Recommended dilutions:</b>	IHC: 1/50 - 1/500. Optimal dilutions/concentrations should be determined by the end user.
<b>Conjugation:</b>	Unconjugated
<b>Immunogen:</b>	Band 3 anion transport protein
<b>Isotype:</b>	IgG
<b>Form:</b>	Liquid
<b>Purity:</b>	≥ 95% (SDS-PAGE)
<b>Purification:</b>	Purified by immunogen affinity chromatography.
<b>Storage:</b>	Aliquot and store at -20°C. Avoid repeated freeze/thaw cycles.
<b>Validity:</b>	12 months.
<b>UniProt Primary AC:</b>	P02730 ( <a href="#">UniProt</a> , <a href="#">ExpASY</a> )

# Datasheet

Version: 1.0.0  
Revision date: 22 Nov 2024



**Gene Symbol:** SLC4A1

**GeneID:** [6521](#)

**OMIM:** [109270](#)

**HGNC:** 11027

**KEGG:** hsa:6521

**Ensembl:** ENSG00000004939

**String:** [9606.ENSP00000262418](#)

**Molecular Weight:** Observed MW: 102 kDa

**Buffer:** PBS, pH 7.3, with 0.02% sodium azide and 50% glycerol.

**Concentration:** 2 mg/ml

**Note:** This product is for research use only.

For Reference Only