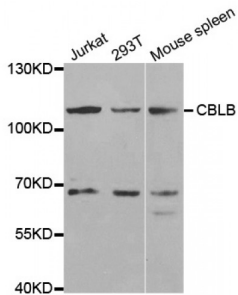
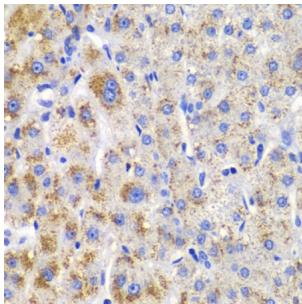


## E3 Ubiquitin-Protein Ligase CBL-B (CBLB) Antibody

Catalogue No.: abx001636



Western blot analysis of extracts of various cell lines, using CBLB antibody (abx001636) at 1/1000 dilution.



Immunohistochemistry of paraffin-embedded human liver injury using CBLB antibody (abx001636) at dilution of 1/200 (40x lens).

CBLB Antibody is a Rabbit Polyclonal antibody against CBLB. CBLB (E3 ubiquitin protein ligase CBL-B) is a protein-coding gene. Diseases associated with CBLB include cannabis dependence. GO annotations related to this gene include signal transducer activity and calcium ion binding. An important paralog of this gene is CBLC.

**Target:** E3 Ubiquitin-Protein Ligase CBL-B (CBLB)

**Clonality:** Polyclonal

**Reactivity:** Human, Mouse, Rat

**Tested Applications:** WB

**Host:** Rabbit

**Recommended dilutions:** WB: 1/500 - 1/1000. Optimal dilutions/concentrations should be determined by the end user.

**Conjugation:** Unconjugated

**Immunogen:** A synthetic peptide corresponding to a sequence within amino acids 883-982 of human CBLB.

**Isotype:** IgG

**Form:** Liquid

# Datasheet

Version: 2.0.0  
Revision date: 09 Mar 2024



<b>Purification:</b>	Purified by affinity chromatography.
<b>Storage:</b>	Aliquot and store at -20°C. Avoid repeated freeze/thaw cycles.
<b>UniProt Primary AC:</b>	Q13191 ( <a href="#">UniProt</a> , <a href="#">ExPASy</a> )
<b>Gene Symbol:</b>	CBLB
<b>GeneID:</b>	<a href="#">868</a>
<b>NCBI Accession:</b>	NP_001308717.1
<b>KEGG:</b>	hsa:868
<b>String:</b>	<a href="#">9606.ENSP00000264122</a>
<b>Molecular Weight:</b>	Calculated MW: 109 kDa Observed MW: 125/130 kDa
<b>Buffer:</b>	PBS, pH 7.3, containing 0.02% sodium azide, 50% glycerol.
<b>Concentration:</b>	> 0.2 mg/ml
<b>Note:</b>	This product is for research use only.

For Reference Only