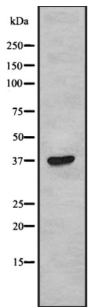


Taste Receptor Type 2 Member 38 (TAS2R38) Antibody

Catalogue No.: abx218878



Western blot analysis of TAS2R38 using COLO205 whole cell lysates.

TAS2R38 Antibody is a Rabbit Polyclonal against TAS2R38.

Target: Taste Receptor Type 2 Member 38 (TAS2R38)

Clonality: Polyclonal

Reactivity: Human, Mouse, Rat

Tested Applications: WB

Host: Rabbit

Recommended dilutions: WB: 1/1000 - 1/3000. Optimal dilutions/concentrations should be determined by the end user.

Conjugation: Unconjugated

Immunogen: Synthesised peptide derived from human TAS2R38

Form: Liquid

Purification: Purified by affinity chromatography using epitope-specific peptide.

Storage: Aliquot and store at -20°C. Avoid repeated freeze/thaw cycles.

UniProt Primary AC: P59533 ([UniProt](#), [ExPASy](#))

Gene Symbol: TAS2R38

GeneID: [5726](#)

KEGG: hsa:5726

Datasheet

Version: 1.0.0

Revision date: 28 Dec 2024



Ensembl:	ENSG00000257138
String:	9606.ENSP00000448219
Molecular Weight:	38 kDa
Buffer:	PBS, pH 7.4, 150 mM NaCl, 0.02% sodium azide and 50% glycerol.
Specificity:	TAS2R38 Antibody detects endogenous levels of total TAS2R38
Concentration:	1 mg/ml
Note:	This product is for research use only.

For Reference Only