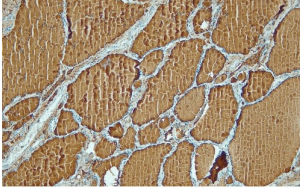
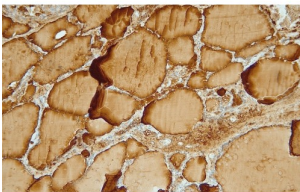


## Thyroglobulin (TG) Antibody

Catalogue No.: abx218950



IHC-P analysis of human thyroid metastasis tissue (4  $\mu$ m section). The antibody stains thyroglobulin in follicular epithelial cells as well as colloid tissue.



IHC-P analysis of human thyroid metastasis tissue (4  $\mu$ m section). The antibody stains thyroglobulin in follicular epithelial cells as well as colloid tissue.

Thyroglobulin (TG) Antibody is a Rabbit Monoclonal antibody for the detection of Thyroglobulin.

**Target:** Thyroglobulin (TG)

**Clonality:** Monoclonal

**Clone:** X755

**Reactivity:** Human

**Tested Applications:** IHC

**Host:** Rabbit

**Recommended dilutions:** IHC-P: 1/100 - 1/200. Optimal dilutions/concentrations should be determined by the end user.

**Conjugation:** Unconjugated

**Immunogen:** Synthetic peptide derived from the C-terminal region of human Thyroglobulin.

**Epitope Region:** Leu2745-Lys2764

**Isotype:** IgG

# Datasheet

Version: 1.0.0  
Revision date: 24 Apr 2025



<b>Form:</b>	Liquid
<b>Purification:</b>	Purified from rabbit antiserum by proprietary techniques.
<b>Storage:</b>	Store at 2-8°C.
<b>UniProt Primary AC:</b>	P01266 ( <a href="#">UniProt</a> , <a href="#">ExpASY</a> )
<b>Gene Symbol:</b>	TG
<b>GeneID:</b>	<a href="#">7038</a>
<b>OMIM:</b>	<a href="#">188450</a>
<b>HGNC:</b>	11764
<b>KEGG:</b>	hsa:7038
<b>Ensembl:</b>	ENSG00000042832
<b>String:</b>	<a href="#">9606.ENSP00000220616</a>
<b>Buffer:</b>	20 mM Tris-HCl, pH 8.0, containing 20 mg/ml BSA and 0.05% NaN <sub>3</sub> .
<b>Note:</b>	THIS PRODUCT IS FOR RESEARCH USE ONLY. NOT FOR USE IN DIAGNOSTIC, THERAPEUTIC OR COSMETIC PROCEDURES. NOT FOR HUMAN OR ANIMAL CONSUMPTION.
<b>Directions for use:</b>	It is recommended to use <a href="#">abx291502</a> Primary Antibody Diluent or a diluent containing protease-free BSA (≥ 1 mg/ml) to dilute this antibody.

For Reference Only