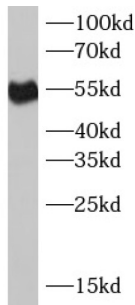
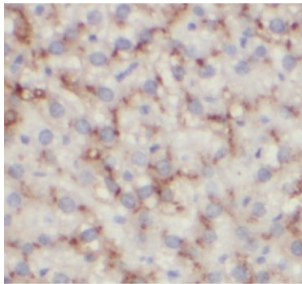


Fc Fragment of IgG Low Affinity IIIa Receptor (FCGR3A) Antibody

Catalogue No.: abx149047



WB analysis of human placenta tissue, using CD16 antibody (1/500 dilution).



IHC-P analysis of human liver tissue, using CD16 antibody (1/200 dilution).

Fc Fragment of IgG Low Affinity IIIa Receptor (FCGR3A) Antibody is a Rabbit Polyclonal antibody for the detection of CD16.

Target:	Fc Fragment of IgG Low Affinity IIIa Receptor (FCGR3A)
Clonality:	Polyclonal
Reactivity:	Human
Tested Applications:	ELISA, WB, IHC
Host:	Rabbit
Recommended dilutions:	WB: 1/200 - 1/2000, IHC: 1/50 - 1/200. Optimal dilutions/concentrations should be determined by the end user.
Conjugation:	Unconjugated
Immunogen:	Fc fragment of IgG, low affinity IIIa, receptor (CD16a)
Isotype:	IgG
Form:	Liquid
Purity:	≥ 95% (SDS-PAGE)

Datasheet

Version: 1.0.0
Revision date: 12 Mar 2025



Purification:	Purified by immunogen affinity chromatography.
Storage:	Aliquot and store at -20°C. Avoid repeated freeze/thaw cycles.
Validity:	12 months.
UniProt Primary AC:	P08637 (UniProt , ExpASY)
Gene Symbol:	FCGR3A
GeneID:	2214
OMIM:	146740
HGNC:	3619
Ensembl:	ENSG00000203747
Molecular Weight:	Observed MW: 55 kDa
Buffer:	PBS, pH 7.3, with 0.02% sodium azide and 50% glycerol.
Concentration:	2 mg/ml
Note:	THIS PRODUCT IS FOR RESEARCH USE ONLY. NOT FOR USE IN DIAGNOSTIC, THERAPEUTIC OR COSMETIC PROCEDURES. NOT FOR HUMAN OR ANIMAL CONSUMPTION.

For Reference Only