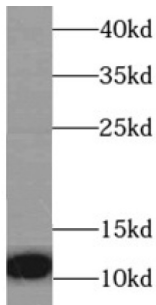
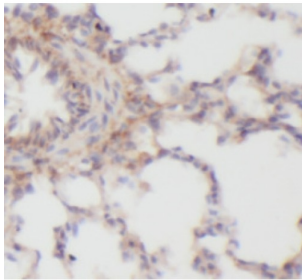


Interleukin 8 / IL8 (CXCL8) Antibody

Catalogue No.: abx217050



WB analysis of A-431 cells, using CXCL8/IL8 antibody (1/1000 dilution).



IHC-P analysis of mouse lung tissue, using CXCL8/IL8 antibody (1/100 dilution).

Interleukin 8 / IL8 (CXCL8) Antibody is a Rabbit Polyclonal antibody for the detection of CXCL8/IL8.

The protein encoded by this gene is a member of the **CXC** chemokine family. This chemokine is one of the major mediators of the inflammatory response. This chemokine is secreted by several cell types. It functions as a chemoattractant, and is also a potent angiogenic factor. This gene is believed to play a role in the pathogenesis of bronchiolitis, a common respiratory tract disease caused by viral infection. This gene and other ten members of the CXC chemokine gene family form a chemokine gene cluster in a region mapped to chromosome 4q.

Target: Interleukin 8 / IL8 (CXCL8)

Clonality: Polyclonal

Reactivity: Human, Mouse

Tested Applications: ELISA, WB, IHC

Host: Rabbit

Recommended dilutions: WB: 1/500 - 1/2000, IHC: 1/50 - 1/200. Optimal dilutions/concentrations should be determined by the end user.

Conjugation: Unconjugated

Immunogen: interleukin 8

Datasheet

Version: 2.0.0
Revision date: 27 Dec 2024



| | |
|----------------------------|--|
| Isotype: | IgG |
| Form: | Liquid |
| Purity: | ≥ 95% (SDS-PAGE) |
| Purification: | Purified by immunogen affinity chromatography. |
| Storage: | Aliquot and store at -20°C. Avoid repeated freeze/thaw cycles. |
| Validity: | 12 months. |
| UniProt Primary AC: | P10145 (UniProt , ExPASy) |
| GeneID: | 3576 |
| OMIM: | 146930 |
| Molecular Weight: | Observed MW: 11 kDa |
| Buffer: | PBS, pH 7.3, with 0.02% sodium azide and 50% glycerol. |
| Concentration: | 2 mg/ml |
| Note: | This product is for research use only. |

For Reference Only