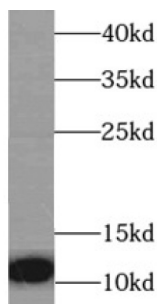
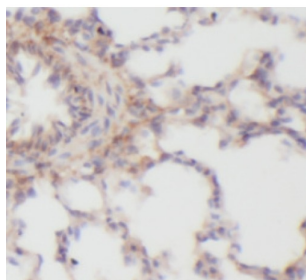


Interleukin 8 / IL8 (CXCL8) Antibody

Catalogue No.: abx217050



WB analysis of A-431 cells, using CXCL8/IL8 antibody (1/1000 dilution).



IHC-P analysis of mouse lung tissue, using CXCL8/IL8 antibody (1/100 dilution).

Interleukin 8 / IL8 (CXCL8) Antibody is a Rabbit Polyclonal antibody for the detection of CXCL8/IL8.

The protein encoded by this gene is a member of the **CXC** chemokine family. This chemokine is one of the major mediators of the inflammatory response. This chemokine is secreted by several cell types. It functions as a chemoattractant, and is also a potent angiogenic factor. This gene is believed to play a role in the pathogenesis of bronchiolitis, a common respiratory tract disease caused by viral infection. This gene and other ten members of the CXC chemokine gene family form a chemokine gene cluster in a region mapped to chromosome 4q.

Target: Interleukin 8 / IL8 (CXCL8)

Clonality: Polyclonal

Reactivity: Human, Mouse

Tested Applications: ELISA, WB, IHC

Host: Rabbit

Recommended dilutions: WB: 1/500 - 1/2000, IHC: 1/50 - 1/200. Optimal dilutions/concentrations should be determined by the end user.

Conjugation: Unconjugated

Immunogen: interleukin 8

Datasheet

Version: 3.0.0

Revision date: 22 Apr 2025



Isotype:	IgG
Form:	Liquid
Purity:	≥ 95% (SDS-PAGE)
Purification:	Purified by immunogen affinity chromatography.
Storage:	Aliquot and store at -20°C. Avoid repeated freeze/thaw cycles.
Validity:	12 months.
UniProt Primary AC:	P10145 (UniProt , ExPASy)
GeneID:	3576
OMIM:	146930
Molecular Weight:	Observed MW: 11 kDa
Buffer:	PBS, pH 7.3, with 0.02% sodium azide and 50% glycerol.
Concentration:	2 mg/ml
Note:	THIS PRODUCT IS FOR RESEARCH USE ONLY. NOT FOR USE IN DIAGNOSTIC, THERAPEUTIC OR COSMETIC PROCEDURES. NOT FOR HUMAN OR ANIMAL CONSUMPTION.