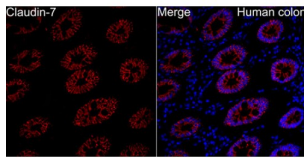
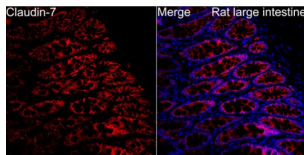


## Claudin 7 (CLDN7) Antibody

Catalogue No.: abx001652



Western blot analysis of lysates from Mouse large intestine using CLDN7 Antibody at 1/2000 dilution. Secondary antibody: HRP-conjugated Goat anti-Rabbit IgG (H+L) at 1/10000 dilution. Lysates/proteins: 25 µg per lane. Blocking buffer: 3% nonfat dry milk in TBST. Exposure time: 25s.



Immunofluorescence analysis of human colon using CLDN7 Antibody at dilution of 1/300 (40x lens). Secondary antibody: Cy3-conjugated Goat anti-Rabbit IgG (H+L) at 1/500 dilution. Blue: DAPI for nuclear staining. Perform high pressure antigen retrieval with 10 mM citrate buffer pH 6.0 before commencing with IF staining protocol.

CLDN7 Antibody is a Rabbit Polyclonal antibody against CLDN7. This gene encodes a member of the claudin family. Claudins are integral membrane proteins and components of tight junction strands. Tight junction strands serve as a physical barrier to prevent solutes and water from passing freely through the paracellular space between epithelial or endothelial cell sheets, and also play critical roles in maintaining cell polarity and signal transductions. Differential expression of this gene has been observed in different types of malignancies, including breast cancer, ovarian cancer, hepatocellular carcinomas, urinary tumors, prostate cancer, lung cancer, head and neck cancers, thyroid carcinomas, etc. Alternatively spliced transcript variants encoding different isoforms have been found.[provided by RefSeq, May 2010].

**Target:** Claudin 7 (CLDN7)

**Clonality:** Polyclonal

**Reactivity:** Human, Mouse, Rat

**Tested Applications:** ELISA, WB, IF/ICC

**Host:** Rabbit

**Recommended dilutions:** ELISA: 1 µg/ml, WB: 1/1000 - 1/5000, IF/ICC: 1/100 - 1/500. Optimal dilutions/concentrations should be determined by the end user.

**Conjugation:** Unconjugated

**Immunogen:** Recombinant fusion protein containing a sequence corresponding to amino acids 29-211 of human CLDN7.

# Datasheet

Version: 3.0.0  
Revision date: 18 Feb 2025



<b>Isotype:</b>	IgG
<b>Form:</b>	Liquid
<b>Purification:</b>	Purified by affinity chromatography.
<b>Storage:</b>	Aliquot and store at -20°C. Avoid repeated freeze/thaw cycles.
<b>UniProt Primary AC:</b>	O95471 ( <a href="#">UniProt</a> , <a href="#">ExPASy</a> )
<b>Gene Symbol:</b>	CLDN7
<b>GeneID:</b>	<a href="#">1366</a>
<b>NCBI Accession:</b>	NP_001298.3
<b>KEGG:</b>	hsa:1366
<b>String:</b>	<a href="#">9606.ENSP00000353475</a>
<b>Molecular Weight:</b>	Calculated MW: 22 kDa Observed MW: 22 kDa
<b>Buffer:</b>	PBS, pH 7.3, containing 0.02% sodium azide, 50% glycerol.
<b>Concentration:</b>	> 0.2 mg/ml
<b>Note:</b>	This product is for research use only.

For Reference Only