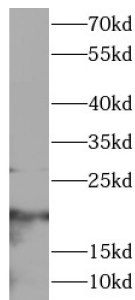


## T-Cell Surface Glycoprotein CD3 Epsilon Chain (CD3E) Antibody

Catalogue No.: abx149085



WB analysis of Jurkat cells, using CD3E antibody (1/1000 dilution).

T-Cell Surface Glycoprotein CD3 Epsilon Chain (CD3E) Antibody is a Rabbit Polyclonal antibody for the detection of CD3 epsilon.

CD3 is a complex of proteins that directly associates with the T cell receptor (TCR). The TCR/CD3 complex of T-lymphocytes consists of either a TCR alpha/beta or TCR gamma/delta heterodimer coexpressed at the cell surface with the invariant subunits of CD3 labeled gamma, delta, epsilon, zeta, and eta. The TCR recognizes antigens bound to major histocompatibility complex (MHC) molecules. TCR-mediated peptide-MHC recognition is transmitted to the CD3 complex, leading to the intracellular signal transduction. CD3 is considered to be a pan-T cell marker for detection of normal and neoplastic T cells.

**Target:** T-Cell Surface Glycoprotein CD3 Epsilon Chain (CD3E)

**Clonality:** Polyclonal

**Reactivity:** Human

**Tested Applications:** ELISA, WB

**Host:** Rabbit

**Recommended dilutions:** WB: 1/500 - 1/2000. Optimal dilutions/concentrations should be determined by the end user.

**Conjugation:** Unconjugated

**Immunogen:** CD3e molecule, epsilon (CD3-TCR complex)

**Isotype:** IgG

**Form:** Liquid

**Purity:** ≥ 95% (SDS-PAGE)

**Purification:** Purified by immunogen affinity chromatography.

# Datasheet

Version: 2.0.0  
Revision date: 26 Mar 2025



<b>Storage:</b>	Aliquot and store at -20°C. Avoid repeated freeze/thaw cycles.
<b>Validity:</b>	12 months.
<b>UniProt Primary AC:</b>	P07766 ( <a href="#">UniProt</a> , <a href="#">ExPASy</a> )
<b>Gene Symbol:</b>	CD3E
<b>GeneID:</b>	<a href="#">916</a>
<b>OMIM:</b>	<a href="#">186830</a>
<b>HGNC:</b>	1674
<b>KEGG:</b>	hsa:916
<b>Ensembl:</b>	ENSG00000198851
<b>String:</b>	<a href="#">9606.ENSP00000354566</a>
<b>Molecular Weight:</b>	Observed MW: 23 kDa
<b>Buffer:</b>	PBS, pH 7.3, with 0.02% sodium azide and 50% glycerol.
<b>Concentration:</b>	2 mg/ml
<b>Note:</b>	THIS PRODUCT IS FOR RESEARCH USE ONLY. NOT FOR USE IN DIAGNOSTIC, THERAPEUTIC OR COSMETIC PROCEDURES. NOT FOR HUMAN OR ANIMAL CONSUMPTION.

For Reference Only