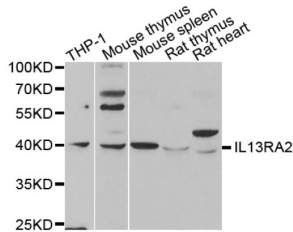


## Interleukin 13 Receptor Alpha 2 (IL13RA2) Antibody

Catalogue No.: abx001660



Western blot analysis of extracts of various cell lines, using IL13RA2 antibody (abx001660) at 1/1000 dilution.

IL13RA2 Antibody is a Rabbit Polyclonal antibody against IL13RA2. The protein encoded by this gene is closely related to IL13RA1, a subunit of the interleukin 13 receptor complex. This protein binds IL13 with high affinity, but lacks cytoplasmic domain, and does not appear to function as a signal mediator. It is reported to play a role in the internalization of IL13.

<b>Target:</b>	Interleukin 13 Receptor Alpha 2 (IL13RA2)
<b>Clonality:</b>	Polyclonal
<b>Reactivity:</b>	Human, Mouse, Rat
<b>Tested Applications:</b>	WB, IHC
<b>Host:</b>	Rabbit
<b>Recommended dilutions:</b>	WB: 1/1000 - 1/5000, IHC-P: 1/50 - 1/200. Not tested in IHC-F. Optimal dilutions/concentrations should be determined by the end user.
<b>Conjugation:</b>	Unconjugated
<b>Immunogen:</b>	Recombinant fusion protein containing a sequence corresponding to amino acids 27-343 of human IL13RA2.
<b>Isotype:</b>	IgG
<b>Form:</b>	Liquid
<b>Purification:</b>	Purified by affinity chromatography.
<b>Storage:</b>	Aliquot and store at -20°C. Avoid repeated freeze/thaw cycles.
<b>UniProt Primary AC:</b>	Q14627 ( <a href="#">UniProt</a> , <a href="#">ExPASy</a> )
<b>Gene Symbol:</b>	IL13RA2

# Datasheet

Version: 2.0.0  
Revision date: 03 Dec 2024



**GeneID:** [3598](#)

**NCBI Accession:** NP\_000631.1

**KEGG:** hsa:3598

**String:** [9606.ENSP00000361004](#)

**Molecular Weight:** Calculated MW: 44 kDa  
Observed MW: 50-65 kDa

**Buffer:** PBS, pH 7.3, containing 0.02% sodium azide, 50% glycerol.

**Concentration:** > 0.2 mg/ml

**Note:** This product is for research use only.

For Reference Only