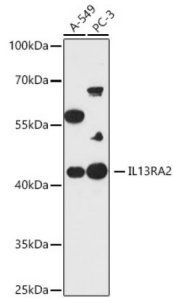
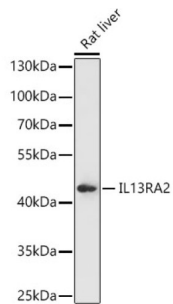


## Interleukin 13 Receptor Alpha 2 (IL13RA2) Antibody

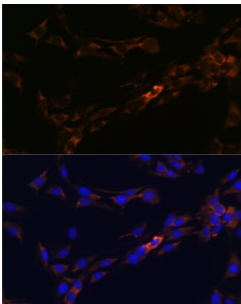
Catalogue No.: abx001660



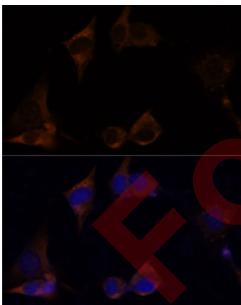
Western blot analysis of extracts of various cell lines using IL13RA2 Antibody (1/1000 dilution).



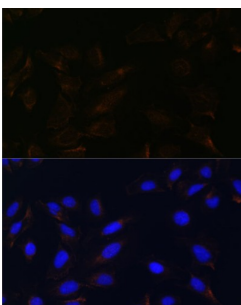
Western blot analysis of extracts of Rat liver using IL13RA2 Antibody (1/1000 dilution).



Immunofluorescence analysis of C6 cells using IL13RA2 Antibody (1/100 dilution). Blue: DAPI for nuclear staining.



Immunofluorescence analysis of NIH/3T3 cells using IL13RA2 Antibody (1/100 dilution). Blue: DAPI for nuclear staining.



Immunofluorescence analysis of U2OS cells using IL13RA2 Antibody (1/100 dilution). Blue: DAPI for nuclear staining.

# Datasheet

Version: 3.0.0  
Revision date: 04 Apr 2025



IL13RA2 Antibody is a Rabbit Polyclonal antibody against IL13RA2. The protein encoded by this gene is closely related to IL13RA1, a subunit of the interleukin 13 receptor complex. This protein binds IL13 with high affinity, but lacks cytoplasmic domain, and does not appear to function as a signal mediator. It is reported to play a role in the internalization of IL13.

<b>Target:</b>	Interleukin 13 Receptor Alpha 2 (IL13RA2)
<b>Clonality:</b>	Polyclonal
<b>Reactivity:</b>	Human, Mouse, Rat
<b>Tested Applications:</b>	WB, IF/ICC
<b>Host:</b>	Rabbit
<b>Recommended dilutions:</b>	WB: 1/500 - 1/2000, IF/ICC: 1/50 - 1/200. Optimal dilutions/concentrations should be determined by the end user.
<b>Conjugation:</b>	Unconjugated
<b>Immunogen:</b>	A synthetic peptide corresponding to human IL13RA2
<b>Isotype:</b>	IgG
<b>Form:</b>	Liquid
<b>Purification:</b>	Purified by affinity chromatography.
<b>Storage:</b>	Aliquot and store at -20°C. Avoid repeated freeze/thaw cycles.
<b>UniProt Primary AC:</b>	Q14627 ( <a href="#">UniProt</a> , <a href="#">ExpASY</a> )
<b>Gene Symbol:</b>	IL13RA2
<b>GeneID:</b>	<a href="#">3598</a>
<b>NCBI Accession:</b>	NP_000631.1
<b>KEGG:</b>	hsa:3598
<b>String:</b>	<a href="#">9606.ENSP00000361004</a>
<b>Molecular Weight:</b>	Calculated MW: 44 kDa Observed MW: 44 kDa
<b>Buffer:</b>	PBS, pH 7.3, containing 0.01% thiomersal, 50% glycerol.

# Datasheet

Version: 3.0.0

Revision date: 04 Apr 2025



**Concentration:** 1 mg/ml

**Note:** THIS PRODUCT IS FOR RESEARCH USE ONLY. NOT FOR USE IN DIAGNOSTIC, THERAPEUTIC OR COSMETIC PROCEDURES. NOT FOR HUMAN OR ANIMAL CONSUMPTION.

For Reference Only