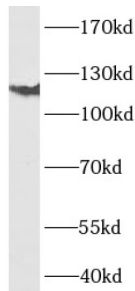


Integrin Alpha 6 (ITGA6) Antibody

Catalogue No.: abx216327



WB analysis of A549 cells, using ITGA6 antibody (1/1000 dilution).

Integrin Alpha 6 (ITGA6) Antibody is a Rabbit Polyclonal antibody for the detection of Integrin alpha 6.

ITGA6, also named as CD49f and VLA-6, belongs to the integrin alpha chain family. It is a receptor for laminin on platelets. ITGA6 is a receptor for laminin in epithelial cells and it plays a critical structural role in the hemidesmosome. Defects in ITGA6 are a cause of epidermolysis bullosa letalis with pyloric atresia (EB-PA) which also known as junctional epidermolysis bullosa with pyloric atresia (PA-JEB) or aplasia cutis congenita with gastrointestinal atresia.

Target:	Integrin Alpha 6 (ITGA6)
Clonality:	Polyclonal
Reactivity:	Human
Tested Applications:	ELISA, WB
Host:	Rabbit
Recommended dilutions:	WB: 1/200 - 1/2000. Optimal dilutions/concentrations should be determined by the end user.
Conjugation:	Unconjugated
Immunogen:	integrin, alpha 6
Isotype:	IgG
Form:	Liquid
Purity:	≥ 95% (SDS-PAGE)
Purification:	Purified by immunogen affinity chromatography.
Storage:	Aliquot and store at -20°C. Avoid repeated freeze/thaw cycles.

Datasheet

Version: 1.0.0
Revision date: 10 Oct 2024

Validity:	12 months.
UniProt Primary AC:	P23229 (UniProt , ExPASy)
Gene Symbol:	ITGA6
GeneID:	3655
OMIM:	147556
HGNC:	6142
Ensembl:	ENSG00000091409
Molecular Weight:	Observed MW: 120 kDa
Buffer:	PBS, pH 7.3, with 0.02% sodium azide and 50% glycerol.
Concentration:	2 mg/ml
Note:	This product is for research use only.

For Reference Only