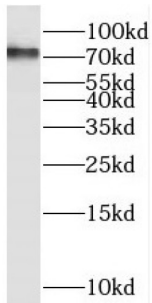
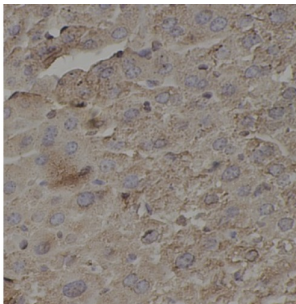


Receptor Interacting Serine Threonine Kinase 1 (RIPK1) Antibody

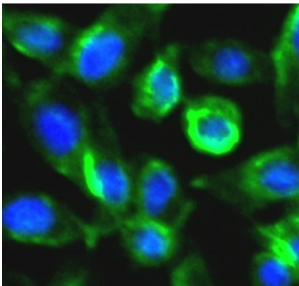
Catalogue No.: abx147213



WB analysis of HeLa cells, using RIP1 antibody (1/1000 dilution).



IHC-P analysis of mouse liver tissue, using RIP1 antibody (1/200 dilution).



IF analysis of U251 cells, using RIP1 antibody (1/50 dilution).

Receptor Interacting Serine Threonine Kinase 1 (RIPK1) Antibody is a Rabbit Polyclonal antibody for the detection of RIP1.

Target: Receptor Interacting Serine Threonine Kinase 1 (RIPK1)

Clonality: Polyclonal

Reactivity: Human, Mouse, Rat

Tested Applications: ELISA, WB, IHC, IF/ICC

Host: Rabbit

Recommended dilutions: WB: 1/500 - 1/2000, IHC: 1/50 - 1/500, IF/ICC: 1/50 - 1/100. Optimal dilutions/concentrations should be determined by the end user.

Conjugation: Unconjugated

Datasheet

Version: 2.0.0
Revision date: 08 Apr 2025



Immunogen:	Receptor-interacting serine/threonine-protein kinase 1
Isotype:	IgG
Form:	Liquid
Purity:	≥ 95% (SDS-PAGE)
Purification:	Purified by immunogen affinity chromatography.
Storage:	Aliquot and store at -20°C. Avoid repeated freeze/thaw cycles.
Validity:	12 months.
UniProt Primary AC:	Q13546 (UniProt , ExPASy)
Gene Symbol:	RIPK1
GeneID:	8737
OMIM:	603453
HGNC:	10019
KEGG:	hsa:8737
Ensembl:	ENSG00000137275
String:	9606.ENSP00000259808
Molecular Weight:	Observed MW: 76 kDa
Buffer:	PBS, pH 7.3, with 0.02% sodium azide and 50% glycerol.
Concentration:	2 mg/ml
Note:	THIS PRODUCT IS FOR RESEARCH USE ONLY. NOT FOR USE IN DIAGNOSTIC, THERAPEUTIC OR COSMETIC PROCEDURES. NOT FOR HUMAN OR ANIMAL CONSUMPTION.