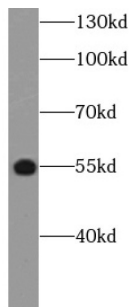


Chemokine Like Receptor 1 (CMKLR1) Antibody

Catalogue No.: abx146754



WB analysis of Rat heart tissue, using CMKLR1 antibody (1/1000 dilution).

Chemokine Like Receptor 1 (CMKLR1) Antibody is a Rabbit Polyclonal antibody for the detection of CMKLR1.

Target:	Chemokine Like Receptor 1 (CMKLR1)
Clonality:	Polyclonal
Reactivity:	Mouse, Rat
Tested Applications:	ELISA, WB, IF/ICC
Host:	Rabbit
Recommended dilutions:	WB: 1/500 - 1/2000, IF/ICC: 1/50 - 1/200. Optimal dilutions/concentrations should be determined by the end user.
Conjugation:	Unconjugated
Immunogen:	Chemokine-like receptor 1
Isotype:	IgG
Form:	Liquid
Purity:	≥ 95% (SDS-PAGE)
Purification:	Purified by immunogen affinity chromatography.
Storage:	Aliquot and store at -20°C. Avoid repeated freeze/thaw cycles.
Validity:	12 months.
UniProt Primary AC:	Q99788 (UniProt , ExpASY)

Datasheet

Version: 2.0.0
Revision date: 22 Dec 2024



Gene Symbol: CMKLR1

GeneID: [1240](#)

OMIM: [602351](#)

HGNC: 2121

KEGG: hsa:1240

Ensembl: ENSG00000174600

String: [9606.ENSP00000311733](#)

Molecular Weight: Observed MW: 55 kDa

Buffer: PBS, pH 7.3, with 0.02% sodium azide and 50% glycerol.

Concentration: 2 mg/ml

Note: This product is for research use only.

For Reference Only