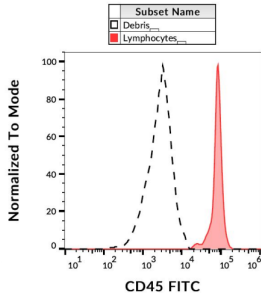
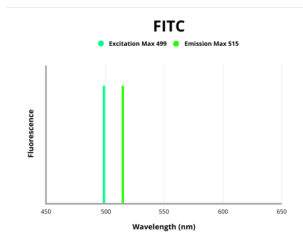


Receptor-Type Tyrosine-Protein Phosphatase C / CD45 (PTPRC) Antibody (FITC)

Catalogue No.: abx140355



Surface staining of CD45 in human peripheral blood with CD45 Antibody (FITC).



Fluorescence emission spectra of FITC.

CD45 Antibody is a Mouse Monoclonal against CD45.

Target: Receptor-Type Tyrosine-Protein Phosphatase C / CD45 (PTPRC)

Clonality: Monoclonal

Clone: W968

Modification: Monoclonal

Reactivity: Human

Tested Applications: FCM

Host: Mouse

Recommended dilutions: FCM: 4 µl/100 µl of whole blood or 10⁶ cells. Optimal dilutions/concentrations should be determined by the end user. The content of a vial (0.4 ml) is sufficient for 100 tests.

Conjugation: FITC

Excitation/Emission: 499/515

Datasheet

Version: 4.0.0
Revision date: 13 Mar 2025



Laser Line:	488
Immunogen:	Human peripheral blood mononuclear cells.
Isotype:	IgG ₁ , Kappa
Storage:	Store in the dark at 2-8°C. Avoid exposure to light. Do not freeze.
UniProt Primary AC:	P08575 (UniProt , ExPASy)
Gene Symbol:	PTPRC
GeneID:	5788
KEGG:	hsa:5788
String:	9606.ENSP00000411355
Buffer:	Stabilizing PBS solution containing 15 mM sodium azide.
Specificity:	The mouse monoclonal antibody reacts with all alternative forms of human CD45 antigen (Leukocyte Common Antigen), a 180-220 kDa single chain type I transmembrane protein expressed at high level on all cells of hematopoietic origin, except from erythrocytes and platelets.
Note:	THIS PRODUCT IS FOR RESEARCH USE ONLY. NOT FOR USE IN DIAGNOSTIC, THERAPEUTIC OR COSMETIC PROCEDURES. NOT FOR HUMAN OR ANIMAL CONSUMPTION.

For Reference Only