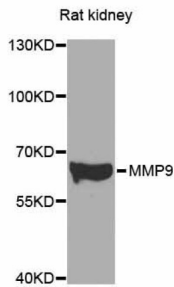
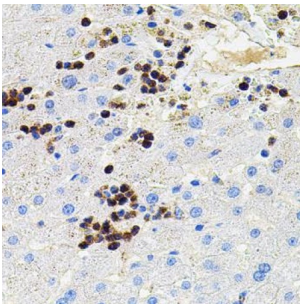


Matrix Metalloproteinase-9 (MMP9) Antibody

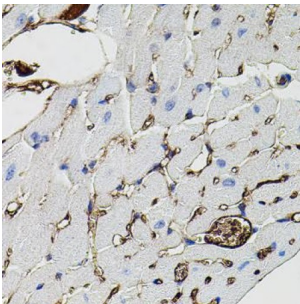
Catalogue No.: abx126179



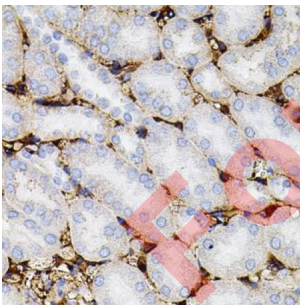
Western blot analysis of extracts of Rat kidney cells, using MMP9 antibody.



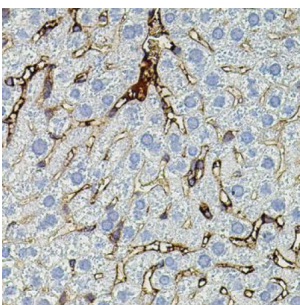
Immunohistochemistry of paraffin-embedded human liver injury using MMP9 antibody at dilution of 1:100 (x40 lens).



Immunohistochemistry of paraffin-embedded mouse heart using MMP9 antibody at dilution of 1:100 (x40 lens).



Immunohistochemistry of paraffin-embedded mouse kidney using MMP9 antibody at dilution of 1:100 (x40 lens).



Immunohistochemistry of paraffin-embedded mouse liver using MMP9 antibody at dilution of 1:100 (x40 lens).

Datasheet

Version: 2.0.0
Revision date: 18 Sep 2024



MMP9 Antibody is a Rabbit Polyclonal against MMP9.

Target:	Matrix Metalloproteinase-9 (MMP9)
Clonality:	Polyclonal
Reactivity:	Human, Mouse
Tested Applications:	IHC
Host:	Rabbit
Recommended dilutions:	IHC-P: 1/100 - 1/200. Not tested in IHC-F. Optimal dilutions/concentrations should be determined by the end user.
Conjugation:	Unconjugated
Immunogen:	A synthetic peptide corresponding to a sequence within amino acids 401-500 of human MMP9.
Isotype:	IgG
Form:	Liquid
Purification:	Purified by affinity chromatography.
Storage:	Aliquot and store at -20°C. Avoid repeated freeze/thaw cycles.
UniProt Primary AC:	P14780 (UniProt , ExPASy)
GeneID:	4318
NCBI Accession:	NP_004985.2
KEGG:	hsa:4318
String:	9606.ENSP00000361405
Enzyme Commission Number:	EC 3.4.24, EC 3.4.24.35
Molecular Weight:	Calculated MW: 78 kDa
Buffer:	PBS, pH 7.3, containing 0.02% sodium azide, 50% glycerol.
Concentration:	> 0.2 mg/ml

Datasheet

Version: 2.0.0

Revision date: 18 Sep 2024



Note: This product is for research use only.

For Reference Only