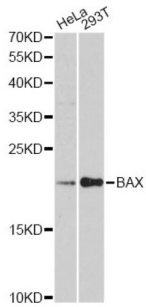
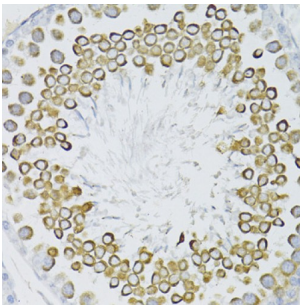


Bcl2 Associated X Protein (BAX) Antibody

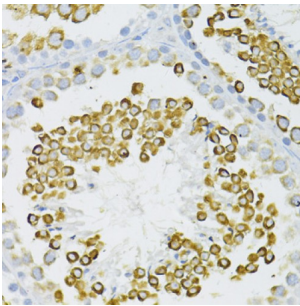
Catalogue No.: abx125555



Western blot analysis of extracts of various cell lines, using BAX antibody (abx125555) at 1:3000 dilution.



Immunohistochemistry of paraffin-embedded rat testis using BAX antibody (abx125555) at dilution of 1/100 (40x lens).



Immunohistochemistry of paraffin-embedded mouse testis using BAX antibody (abx125555) at dilution of 1/100 (40x lens).

BAX Antibody is a Rabbit Polyclonal against BAX.

Target: Bcl2 Associated X Protein (BAX)

Clonality: Polyclonal

Reactivity: Human, Mouse, Rat

Tested Applications: WB, IHC, IF/ICC, IP

Host: Rabbit

Recommended dilutions: WB: 1/500 - 1/1000, IHC-P: 1/50 - 1/200, IF/ICC: 1/50 - 1/200, IP: 1/50 - 1/200. Not tested in IHC-F. Optimal dilutions/concentrations should be determined by the end user.

Conjugation: Unconjugated

Datasheet

Version: 2.0.0
Revision date: 27 Dec 2024



Immunogen:	A synthetic peptide corresponding to a sequence within amino acids 1-100 of human Bax.
Isotype:	IgG
Form:	Liquid
Purification:	Purified by affinity chromatography.
Storage:	Aliquot and store at -20°C. Avoid repeated freeze/thaw cycles.
UniProt Primary AC:	Q07812 (UniProt , ExPASy)
Gene Symbol:	BAX
GeneID:	581
NCBI Accession:	NP_620116.1
Molecular Weight:	Calculated MW: 21 kDa Observed MW: 21 kDa
Buffer:	PBS, pH 7.3, containing 0.05% Proclin-300, 50% glycerol.
Concentration:	> 0.2 mg/ml
Note:	This product is for research use only.

For Reference Only