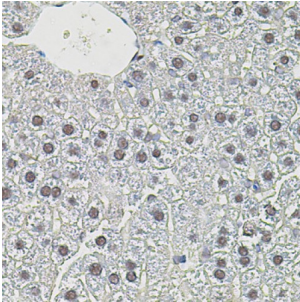
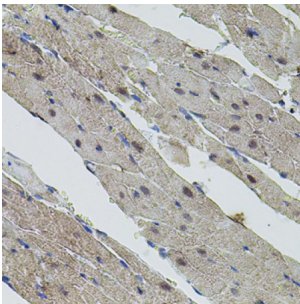


Myc Proto-Oncogene Protein (MYC) Antibody

Catalogue No.: abx126207



Immunohistochemistry of paraffin-embedded Mouse liver using MYC Antibody (1/100 dilution, 40x lens).



Immunohistochemistry of paraffin-embedded Rat heart using MYC Antibody (1/100 dilution, 40x lens).

MYC Antibody is a Rabbit Polyclonal against MYC.

Target:	Myc Proto-Oncogene Protein (MYC)
Clonality:	Polyclonal
Reactivity:	Mouse, Rat
Tested Applications:	IHC
Host:	Rabbit
Recommended dilutions:	IHC-P: 1/50 - 1/100. Not tested in IHC-F. Optimal dilutions/concentrations should be determined by the end user.
Conjugation:	Unconjugated
Immunogen:	A synthetic peptide corresponding to human MYC
Isotype:	IgG
Form:	Liquid
Purification:	Purified by affinity chromatography.

Datasheet

Version: 1.0.0
Revision date: 23 Feb 2025



Storage: Aliquot and store at -20°C. Avoid repeated freeze/thaw cycles.

UniProt Primary AC: P01106 ([UniProt](#), [ExpASY](#))

Gene Symbol: MYC

GeneID: [4609](#)

NCBI Accession: NP_001341799.1

KEGG: hsa:4609

String: [9606.ENSP00000479618](#)

Buffer: PBS, pH 7.3, containing 0.02% sodium azide, 50% glycerol.

Concentration: 1 mg/ml

Note: This product is for research use only.

For Reference Only