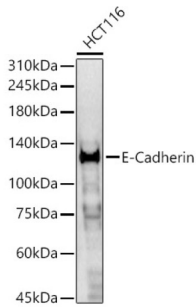
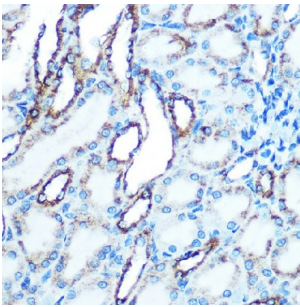


Cadherin-1 / E-Cadherin (CDH1) Antibody

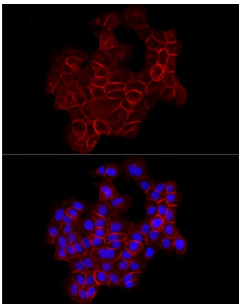
Catalogue No.: abx125644



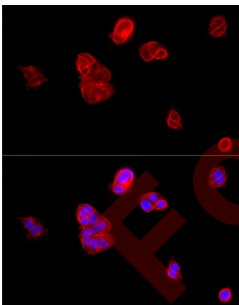
Western blot analysis of HCT116 using E-Cadherin Antibody (1/400 dilution).



Immunohistochemistry of paraffin-embedded Rat kidney using E-Cadherin Antibody (1/50 dilution, 40x lens). Microwave antigen retrieval was performed in 10 mM Tris/EDTA buffer pH 9.0 before commencing with IHC staining protocol.



Immunofluorescence analysis of A-431 cells using E-Cadherin Antibody (1/100 dilution, 40x lens). Blue: DAPI for nuclear staining.



Immunofluorescence analysis of MCF7 cells using E-Cadherin Antibody (1/100 dilution, 40x lens). Blue: DAPI for nuclear staining.

CDH1 Antibody is a Rabbit Polyclonal against CDH1.

Target: Cadherin-1 / E-Cadherin (CDH1)

Clonality: Polyclonal

Reactivity: Human, Rat

Datasheet

Version: 2.0.0
Revision date: 23 Feb 2025



Tested Applications:	WB, IHC, IF/ICC
Host:	Rabbit
Recommended dilutions:	WB: 1/500 - 1/2000, IHC-P: 1/50 - 1/100, IF/ICC: 1/50 - 1/200. Not tested in IHC-F. Optimal dilutions/concentrations should be determined by the end user.
Conjugation:	Unconjugated
Immunogen:	A synthetic peptide corresponding to human E-Cadherin
Isotype:	IgG
Form:	Liquid
Purification:	Purified by affinity chromatography.
Storage:	Aliquot and store at -20°C. Avoid repeated freeze/thaw cycles.
UniProt Primary AC:	P12830 (UniProt , ExPASy)
Gene Symbol:	CDH1
GeneID:	999
NCBI Accession:	NP_004351.1
KEGG:	hsa:999
String:	9606.ENSP00000261769
Molecular Weight:	Calculated MW: 90 kDa/97 kDa Observed MW: 125 kDa
Buffer:	PBS, pH 7.3, containing 0.01% thiomersal, 50% glycerol.
Concentration:	1 mg/ml
Note:	This product is for research use only.