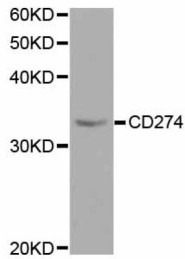


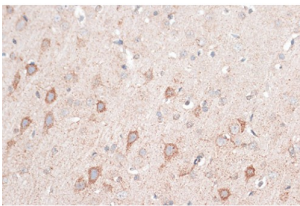
## Programmed Cell Death 1 Ligand 1 (CD274) Antibody

Catalogue No.: abx125632

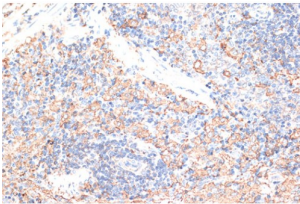
Mouse skeletal muscle



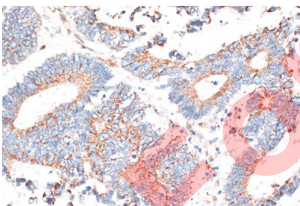
Western blot analysis of extracts of mouse skeletal muscle, using CD274 antibody (abx125632) at 1/1000 dilution.



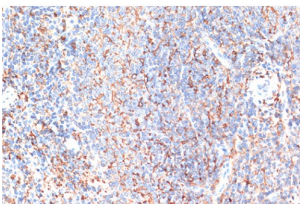
Immunohistochemistry of paraffin-embedded rat brain using CD274 Antibody (abx125632) at dilution of 1/100 (40x lens).



Immunohistochemistry of paraffin-embedded rat spleen using CD274 Antibody (abx125632) at dilution of 1/100 (40x lens).



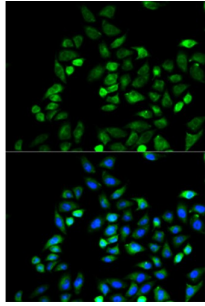
Immunohistochemistry of paraffin-embedded human colon carcinoma using CD274 Antibody (abx125632) at dilution of 1/100 (40x lens).



Immunohistochemistry of paraffin-embedded mouse spleen using CD274 Antibody (abx125632) at dilution of 1/100 (40x lens).

# Datasheet

Version: 2.0.0  
Revision date: 24 Dec 2024



Immunofluorescence analysis of HeLa cells using CD274 antibody (abx125632). Blue: DAPI for nuclear staining.

Programmed Cell Death 1 Ligand 1 Antibody is a Rabbit Polyclonal against PD-L1 (CD274).

<b>Target:</b>	Programmed Cell Death 1 Ligand 1 (CD274)
<b>Clonality:</b>	Polyclonal
<b>Reactivity:</b>	Human, Mouse, Rat
<b>Tested Applications:</b>	WB, IHC
<b>Host:</b>	Rabbit
<b>Recommended dilutions:</b>	WB: 1/100 - 1/500, IHC-P: 1/50 - 1/200. Not tested in IHC-F. Optimal dilutions/concentrations should be determined by the end user.
<b>Conjugation:</b>	Unconjugated
<b>Immunogen:</b>	A synthetic peptide corresponding to a sequence within amino acids 19-238 of human PD-L1/CD274.
<b>Isotype:</b>	IgG
<b>Form:</b>	Liquid
<b>Purification:</b>	Purified by affinity chromatography.
<b>Storage:</b>	Aliquot and store at -20°C. Avoid repeated freeze/thaw cycles.
<b>UniProt Primary AC:</b>	Q9NZQ7 ( <a href="#">UniProt</a> , <a href="#">ExPASy</a> )
<b>Gene Symbol:</b>	CD274
<b>GeneID:</b>	<a href="#">29126</a>
<b>NCBI Accession:</b>	NP_054862.1

# Datasheet

Version: 2.0.0  
Revision date: 24 Dec 2024



**String:** [9606.ENSF00000370989](#)

**Molecular Weight:** Calculated MW: 33 kDa  
Observed MW: 40-50 kDa

**Buffer:** PBS, pH 7.3, containing 0.05% Proclin-300, 50% glycerol.

**Concentration:** > 0.2 mg/ml

**Note:** This product is for research use only.

For Reference Only