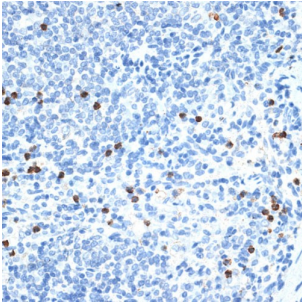
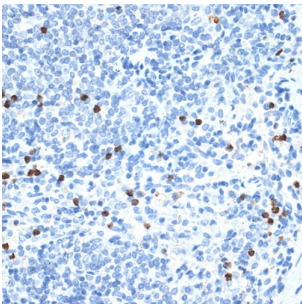


## Matrix Metalloproteinase-9 (MMP9) Antibody

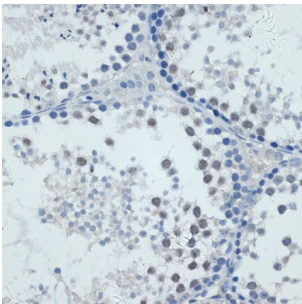
Catalogue No.: abx126173



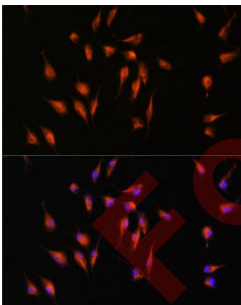
Immunohistochemistry of paraffin-embedded rat spleen using MMP9 Antibody (1/100 dilution, 40x lens). Microwave antigen retrieval was performed in 10 mM PBS buffer pH 7.2 before commencing with IHC staining protocol.



Immunohistochemistry of paraffin-embedded mouse testis using MMP9 Antibody (1/100 dilution, 40x lens). Microwave antigen retrieval was performed in 10 mM PBS buffer pH 7.2 before commencing with IHC staining protocol.



Immunohistochemistry of paraffin-embedded mouse spleen using MMP9 Antibody (1/100 dilution, 40x lens). Microwave antigen retrieval was performed in 10 mM PBS buffer pH 7.2 before commencing with IHC staining protocol.



Immunofluorescence analysis of L929 cells using MMP9 Antibody (1/100 dilution). Blue: DAPI for nuclear staining.

MMP9 Antibody is a Rabbit Polyclonal against MMP9.

**Target:** Matrix Metalloproteinase-9 (MMP9)

**Clonality:** Polyclonal

**Reactivity:** Mouse, Rat

# Datasheet

Version: 2.0.0  
Revision date: 28 Mar 2025



<b>Tested Applications:</b>	IHC, IF/ICC
<b>Host:</b>	Rabbit
<b>Recommended dilutions:</b>	IHC-P: 1/50 - 1/200, IF/ICC: 1/50 - 1/200. Not tested in IHC-F. Optimal dilutions/concentrations should be determined by the end user.
<b>Conjugation:</b>	Unconjugated
<b>Immunogen:</b>	Recombinant fusion protein corresponding to human MMP9
<b>Isotype:</b>	IgG
<b>Form:</b>	Liquid
<b>Purification:</b>	Purified by affinity chromatography.
<b>Storage:</b>	Aliquot and store at -20°C. Avoid repeated freeze/thaw cycles.
<b>UniProt Primary AC:</b>	P14780 ( <a href="#">UniProt</a> , <a href="#">ExPASy</a> )
<b>Gene Symbol:</b>	MMP9
<b>GeneID:</b>	<a href="#">4318</a>
<b>NCBI Accession:</b>	NP_004985.2
<b>KEGG:</b>	hsa:4318
<b>String:</b>	<a href="#">9606.ENSP00000361405</a>
<b>Enzyme Commission Number:</b>	EC 3.4.24, EC 3.4.24.35
<b>Molecular Weight:</b>	Calculated MW: 78 kDa Observed MW: 92 kDa
<b>Buffer:</b>	PBS, pH 7.3, containing 0.02% sodium azide, 50% glycerol.
<b>Concentration:</b>	1 mg/ml
<b>Note:</b>	THIS PRODUCT IS FOR RESEARCH USE ONLY. NOT FOR USE IN DIAGNOSTIC, THERAPEUTIC OR COSMETIC PROCEDURES. NOT FOR HUMAN OR ANIMAL CONSUMPTION.