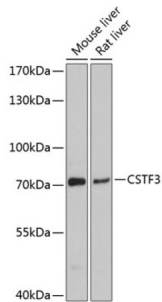


Cleavage Stimulation Factor Subunit 3 (CSTF3) Antibody

Catalogue No.: abx125725



Western blot analysis of extracts of various cell lines using CSTF3 Antibody (1/3000 dilution).

CSTF3 Antibody is a Rabbit Polyclonal against CSTF3.

Target:	Cleavage Stimulation Factor Subunit 3 (CSTF3)
Clonality:	Polyclonal
Reactivity:	Human, Mouse, Rat
Tested Applications:	WB
Host:	Rabbit
Recommended dilutions:	WB: 1/500 - 1/2000. Optimal dilutions/concentrations should be determined by the end user.
Conjugation:	Unconjugated
Immunogen:	Recombinant fusion protein corresponding to human CSTF3
Isotype:	IgG
Form:	Liquid
Purification:	Purified by affinity chromatography.
Storage:	Aliquot and store at -20°C. Avoid repeated freeze/thaw cycles.
UniProt Primary AC:	Q12996 (UniProt , ExPASy)
Gene Symbol:	CSTF3
GeneID:	1479

Datasheet

Version: 2.0.0
Revision date: 23 Feb 2025



NCBI Accession: NP_001028677.1

KEGG: hsa:1479

String: [9606.ENSP00000315791](#)

Molecular Weight: Calculated MW: 4 kDa/12 kDa/82 kDa
Observed MW: 77 kDa

Buffer: PBS, pH 7.3, containing 0.02% sodium azide, 50% glycerol.

Concentration: 1 mg/ml

Note: This product is for research use only.

For Reference Only