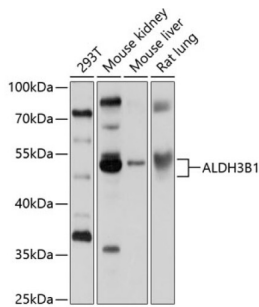


Aldehyde Dehydrogenase 3 Family Member B1 (ALDH3B1) Antibody

Catalogue No.: abx125514



Western blot analysis of extracts of various cell lines using ALDH3B1 Antibody (1/1000 dilution).

ALDH3B1 Antibody is a Rabbit Polyclonal against ALDH3B1.

Target: Aldehyde Dehydrogenase 3 Family Member B1 (ALDH3B1)

Clonality: Polyclonal

Reactivity: Human, Mouse, Rat

Tested Applications: WB

Host: Rabbit

Recommended dilutions: WB: 1/500 - 1/2000. Optimal dilutions/concentrations should be determined by the end user.

Conjugation: Unconjugated

Immunogen: Recombinant fusion protein corresponding to human ALDH3B1

Isotype: IgG

Form: Liquid

Purification: Purified by affinity chromatography.

Storage: Aliquot and store at -20°C. Avoid repeated freeze/thaw cycles.

UniProt Primary AC: P43353 ([UniProt](#), [ExpASY](#))

Gene Symbol: ALDH3B1

GeneID: [221](#)

Datasheet

Version: 3.0.0
Revision date: 12 Mar 2025



NCBI Accession: NP_001025181.1

KEGG: hsa:221

String: [9606.ENSP00000473990](#)

Molecular Weight: Calculated MW: 47 kDa/51 kDa
Observed MW: 52 kDa

Buffer: PBS, pH 7.3, containing 0.02% sodium azide, 50% glycerol.

Concentration: 1 mg/ml

Note: THIS PRODUCT IS FOR RESEARCH USE ONLY. NOT FOR USE IN DIAGNOSTIC, THERAPEUTIC OR COSMETIC PROCEDURES. NOT FOR HUMAN OR ANIMAL CONSUMPTION.

For Reference Only