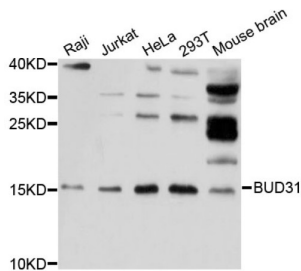


Protein BUD31 Homolog (BUD31) Antibody

Catalogue No.: abx125583



BUD31 Antibody is a Rabbit Polyclonal against BUD31.

Target:	Protein BUD31 Homolog (BUD31)
Clonality:	Polyclonal
Reactivity:	Human, Mouse, Rat
Tested Applications:	WB
Host:	Rabbit
Recommended dilutions:	WB: 1/500 - 1/2000. Optimal dilutions/concentrations should be determined by the end user.
Conjugation:	Unconjugated
Immunogen:	Recombinant fusion protein containing a sequence corresponding to amino acids 1-144 of human BUD31.
Isotype:	IgG
Form:	Liquid
Purification:	Purified by affinity chromatography.
Storage:	Aliquot and store at -20°C. Avoid repeated freeze/thaw cycles.
UniProt Primary AC:	P41223 (UniProt , ExPASy)
Gene Symbol:	BUD31
GeneID:	8896

Datasheet

Version: 6.0.0
Revision date: 12 Dec 2024



NCBI Accession: NP_003901.2

KEGG: hsa:8896

String: [9606.ENSP00000386023](#)

Molecular Weight: Calculated MW: 17 kDa
Observed MW: 17 kDa

Buffer: PBS, pH 7.3, containing 0.01% thimerosal, 50% glycerol.

Concentration: > 0.2 mg/ml

Note: This product is for research use only.

For Reference Only