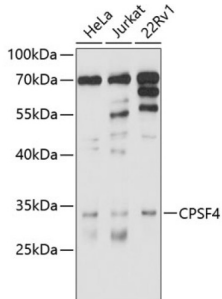


# Cleavage And Polyadenylation Specificity Factor Subunit 4 (CPSF4) Antibody

Catalogue No.: abx125712



Western blot analysis of various lysates using CPSF4 Antibody at 1/1000 dilution. Secondary antibody: HRP-conjugated Goat anti-Rabbit IgG (H+L) at 1/10000 dilution. Lysates/proteins: 25 µg per lane. Blocking buffer: 3% nonfat dry milk in TBST. Exposure time: 15s.

CPSF4 Antibody is a Rabbit Polyclonal against CPSF4.

<b>Target:</b>	Cleavage And Polyadenylation Specificity Factor Subunit 4 (CPSF4)
<b>Clonality:</b>	Polyclonal
<b>Reactivity:</b>	Human
<b>Tested Applications:</b>	ELISA, WB
<b>Host:</b>	Rabbit
<b>Recommended dilutions:</b>	ELISA: 1 µg/ml, WB: 1/1000 - 1/2000. Optimal dilutions/concentrations should be determined by the end user.
<b>Conjugation:</b>	Unconjugated
<b>Immunogen:</b>	Recombinant fusion protein containing a sequence corresponding to amino acids 1-244 of human CPSF4.
<b>Isotype:</b>	IgG
<b>Form:</b>	Liquid
<b>Purification:</b>	Purified by affinity chromatography.
<b>Storage:</b>	Aliquot and store at -20°C. Avoid repeated freeze/thaw cycles.
<b>UniProt Primary AC:</b>	O95639 ( <a href="#">UniProt</a> , <a href="#">ExpASY</a> )
<b>Gene Symbol:</b>	CPSF4

# Datasheet

Version: 2.0.0  
Revision date: 29 Mar 2025



**GeneID:** [10898](#)

**NCBI Accession:** NP\_001075028.1

**KEGG:** hsa:10898

**String:** [9606.ENSP00000292476](#)

**Molecular Weight:** Calculated MW: 30 kDa  
Observed MW: 30 kDa

**Buffer:** PBS, pH 7.3, containing 0.02% sodium azide, 50% glycerol.

**Concentration:** > 0.2 mg/ml

**Note:** THIS PRODUCT IS FOR RESEARCH USE ONLY. NOT FOR USE IN DIAGNOSTIC, THERAPEUTIC OR COSMETIC PROCEDURES. NOT FOR HUMAN OR ANIMAL CONSUMPTION.

For Reference Only