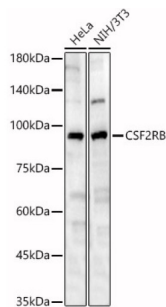


Colony Stimulating Factor 2 Receptor Beta (CSF2RB) Antibody

Catalogue No.: abx125722



Western blot analysis of various lysates, using CSF2RB Antibody at 1/1000 dilution.
Secondary antibody: HRP-conjugated Goat anti-Rabbit IgG (H+L) at 1/10000 dilution.
Lysates/proteins: 25 µg per lane. Blocking buffer: 3% nonfat dry milk in TBST. Exposure time: 30s.

CSF2RB Antibody is a Rabbit Polyclonal against CSF2RB.

Target:	Colony Stimulating Factor 2 Receptor Beta (CSF2RB)
Clonality:	Polyclonal
Reactivity:	Human, Mouse
Tested Applications:	ELISA, WB
Host:	Rabbit
Recommended dilutions:	ELISA: 1 µg/ml, WB: 1/500 - 1/1000. Optimal dilutions/concentrations should be determined by the end user.
Conjugation:	Unconjugated
Immunogen:	Recombinant fusion protein containing a sequence corresponding to amino acids 200-443 of human CSF2RB.
Isotype:	IgG
Form:	Liquid
Purification:	Purified by affinity chromatography.
Storage:	Aliquot and store at -20°C. Avoid repeated freeze/thaw cycles.
UniProt Primary AC:	P32927 (UniProt , ExpASY)
Gene Symbol:	CSF2RB
GeneID:	1439

Datasheet

Version: 3.0.0
Revision date: 13 Mar 2025



NCBI Accession: NP_000386.1

KEGG: hsa:1439

String: [9606.ENSP00000384053](#)

Molecular Weight: Calculated MW: 97 kDa
Observed MW: 95-120 kDa

Buffer: PBS, pH 7.3, containing 0.02% sodium azide, 50% glycerol.

Concentration: > 0.2 mg/ml

Note: THIS PRODUCT IS FOR RESEARCH USE ONLY. NOT FOR USE IN DIAGNOSTIC, THERAPEUTIC OR COSMETIC PROCEDURES. NOT FOR HUMAN OR ANIMAL CONSUMPTION.

For Reference Only