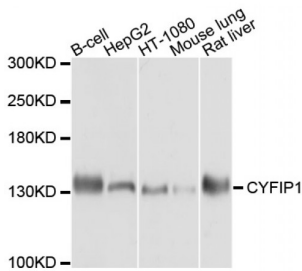


## Cytoplasmic FMR1 Interacting Protein 1 (CYFIP1) Antibody

Catalogue No.: abx125739



Western blot analysis of extracts of various cell lines, using CYFIP1 antibody (abx125739) at 1/1000 dilution.

CYFIP1 Antibody is a Rabbit Polyclonal against CYFIP1.

<b>Target:</b>	Cytoplasmic FMR1 Interacting Protein 1 (CYFIP1)
<b>Clonality:</b>	Polyclonal
<b>Reactivity:</b>	Human, Mouse
<b>Tested Applications:</b>	WB, IP
<b>Host:</b>	Rabbit
<b>Recommended dilutions:</b>	WB: 1/1000 - 1/2000, IP: 0.5-4 µg/200-400 µg whole cell extracts. Optimal dilutions/concentrations should be determined by the end user.
<b>Conjugation:</b>	Unconjugated
<b>Immunogen:</b>	Recombinant fusion protein containing a sequence corresponding to amino acids 1-270 of human CYFIP1.
<b>Isotype:</b>	IgG
<b>Form:</b>	Liquid
<b>Purification:</b>	Purified by affinity chromatography.
<b>Storage:</b>	Aliquot and store at -20°C. Avoid repeated freeze/thaw cycles.
<b>UniProt Primary AC:</b>	Q7L576 ( <a href="#">UniProt</a> , <a href="#">ExpASY</a> )
<b>Gene Symbol:</b>	CYFIP1
<b>GeneID:</b>	<a href="#">23191</a>

# Datasheet

Version: 3.0.0

Revision date: 01 Sep 2024



**NCBI Accession:** NP\_055423.1

**KEGG:** hsa:23191

**String:** [9606.ENSP00000481038](#)

**Molecular Weight:** Calculated MW: 145 kDa  
Observed MW: 145 kDa

**Buffer:** PBS, pH 7.3, containing 0.02% sodium azide, 50% glycerol.

**Concentration:** > 0.2 mg/ml

**Note:** This product is for research use only.

For Reference Only