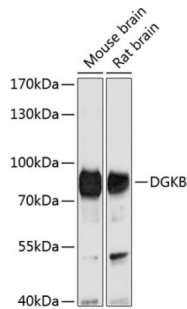


## Diacylglycerol Kinase Beta (DGKB) Antibody

Catalogue No.: abx125758



Western blot analysis of extracts of various cell lines using DGKB Antibody (1/1000 dilution).

DGKB Antibody is a Rabbit Polyclonal against DGKB.

<b>Target:</b>	Diacylglycerol Kinase Beta (DGKB)
<b>Clonality:</b>	Polyclonal
<b>Reactivity:</b>	Mouse, Rat
<b>Tested Applications:</b>	WB
<b>Host:</b>	Rabbit
<b>Recommended dilutions:</b>	WB: 1/500 - 1/2000. Optimal dilutions/concentrations should be determined by the end user.
<b>Conjugation:</b>	Unconjugated
<b>Immunogen:</b>	Recombinant fusion protein corresponding to human DGKB
<b>Isotype:</b>	IgG
<b>Form:</b>	Liquid
<b>Purification:</b>	Purified by affinity chromatography.
<b>Storage:</b>	Aliquot and store at -20°C. Avoid repeated freeze/thaw cycles.
<b>UniProt Primary AC:</b>	Q9Y6T7 ( <a href="#">UniProt</a> , <a href="#">ExPASy</a> )
<b>Gene Symbol:</b>	DGKB
<b>GeneID:</b>	<a href="#">1607</a>

# Datasheet

Version: 3.0.0

Revision date: 18 Apr 2025



**NCBI Accession:** NP\_663733.1

**String:** [9606.ENSP00000385780](#)

**Molecular Weight:** Calculated MW: 87 kDa/90 kDa  
Observed MW: 90 kDa

**Buffer:** PBS, pH 7.3, containing 0.01% thiomersal, 50% glycerol.

**Concentration:** 1 mg/ml

**Note:** THIS PRODUCT IS FOR RESEARCH USE ONLY. NOT FOR USE IN DIAGNOSTIC, THERAPEUTIC OR COSMETIC PROCEDURES. NOT FOR HUMAN OR ANIMAL CONSUMPTION.

For Reference Only