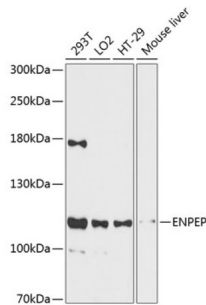


Glutamyl Aminopeptidase (Aminopeptidase A) (ENPEP) Antibody

Catalogue No.: abx125814



Western blot analysis of various lysates using ENPEP Antibody at 1/3000 dilution. Secondary antibody: HRP-conjugated Goat anti-Rabbit IgG (H+L) at 1/10000 dilution. Lysates/proteins: 25 µg per lane. Blocking buffer: 3% nonfat dry milk in TBST. Exposure time: 90s.

ENPEP Antibody is a Rabbit Polyclonal against ENPEP.

Target:	Glutamyl Aminopeptidase (Aminopeptidase A) (ENPEP)
Clonality:	Polyclonal
Reactivity:	Human, Mouse
Tested Applications:	ELISA, WB
Host:	Rabbit
Recommended dilutions:	ELISA: 1 µg/ml, WB: 1/500 - 1/2000. Optimal dilutions/concentrations should be determined by the end user.
Conjugation:	Unconjugated
Immunogen:	A synthetic peptide corresponding to a sequence within amino acids 850-950 of human ENPEP.
Isotype:	IgG
Form:	Liquid
Purification:	Purified by affinity chromatography.
Storage:	Aliquot and store at -20°C. Avoid repeated freeze/thaw cycles.
UniProt Primary AC:	Q07075 (UniProt , ExPASy)
Gene Symbol:	ENPEP
GeneID:	2028

Datasheet

Version: 5.0.0

Revision date: 15 Mar 2025



NCBI Accession: NP_001968.3

Molecular Weight: Calculated MW: 109 kDa
Observed MW: 109 kDa

Buffer: PBS, pH 7.3, containing 0.01% thimerosal, 50% glycerol.

Concentration: > 0.2 mg/ml

Note: THIS PRODUCT IS FOR RESEARCH USE ONLY. NOT FOR USE IN DIAGNOSTIC, THERAPEUTIC OR COSMETIC PROCEDURES. NOT FOR HUMAN OR ANIMAL CONSUMPTION.

For Reference Only