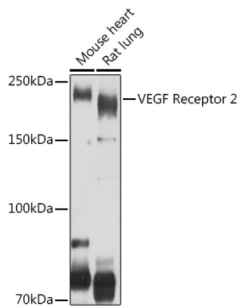
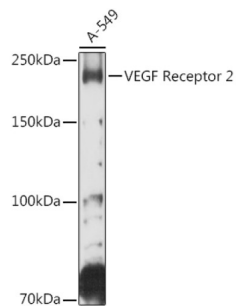


## Kinase Insert Domain Receptor (KDR) Antibody

Catalogue No.: abx126048



Western blot analysis of various lysates using VEGF Receptor 2 Antibody at 1/500 dilution. Secondary antibody: HRP-conjugated Goat anti-Rabbit IgG (H+L) at 1/10000 dilution. Lysates/proteins: 25 µg per lane. Blocking buffer: 3% nonfat dry milk in TBST. Exposure time: 10s.



Western blot analysis of lysates from A-549 cells, using VEGF Receptor 2 Antibody at 1/500 dilution. Secondary antibody: HRP-conjugated Goat anti-Rabbit IgG (H+L) at 1/10000 dilution. Lysates/proteins: 25 µg per lane. Blocking buffer: 3% nonfat dry milk in TBST. Exposure time: 60s.

KDR Antibody is a Rabbit Polyclonal against KDR.

<b>Target:</b>	Kinase Insert Domain Receptor (KDR)
<b>Clonality:</b>	Polyclonal
<b>Reactivity:</b>	Human, Mouse, Rat
<b>Tested Applications:</b>	ELISA, WB
<b>Host:</b>	Rabbit
<b>Recommended dilutions:</b>	ELISA: 1 µg/ml, WB: 1/500 - 1/1000. Optimal dilutions/concentrations should be determined by the end user.
<b>Conjugation:</b>	Unconjugated
<b>Immunogen:</b>	Recombinant fusion protein containing a sequence corresponding to amino acids 1147-1356 of human VEGF Receptor 2.
<b>Isotype:</b>	IgG
<b>Form:</b>	Liquid
<b>Purification:</b>	Purified by affinity chromatography.

# Datasheet

Version: 1.0.0  
Revision date: 13 Mar 2025



**Storage:** Aliquot and store at -20°C. Avoid repeated freeze/thaw cycles.

**UniProt Primary AC:** P35968 ([UniProt](#), [ExPASy](#))

**Gene Symbol:** KDR

**GeneID:** [3791](#)

**NCBI Accession:** NP\_002244.1

**KEGG:** hsa:3791

**String:** [9606.ENSP00000263923](#)

**Molecular Weight:** Calculated MW: 152 kDa  
Observed MW: 210/230 kDa

**Buffer:** PBS, pH 7.3, containing 0.02% sodium azide, 50% glycerol.

**Concentration:** > 0.2 mg/ml

**Note:** THIS PRODUCT IS FOR RESEARCH USE ONLY. NOT FOR USE IN DIAGNOSTIC, THERAPEUTIC OR COSMETIC PROCEDURES. NOT FOR HUMAN OR ANIMAL CONSUMPTION.

For Reference Only