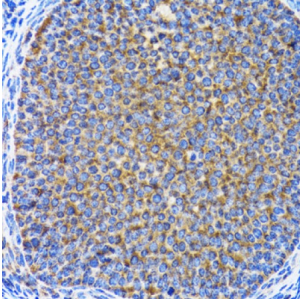
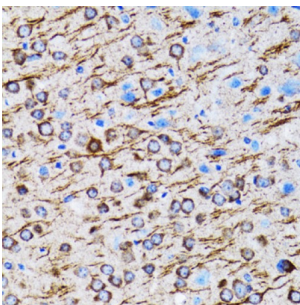


Microtubule-Associated Proteins 1A/1B Light Chain 3A (MAP1LC3A) Antibody

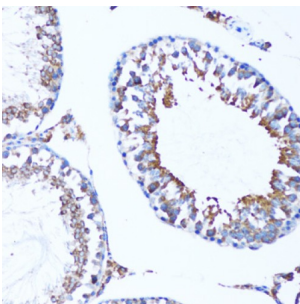
Catalogue No.: abx126115



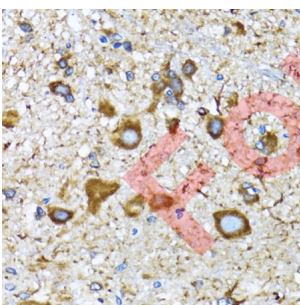
Immunohistochemistry of paraffin-embedded rat ovary using MAP1LC3A antibody (abx126115) at dilution of 1/100 (40x lens).



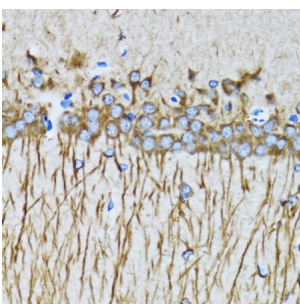
Immunohistochemistry of paraffin-embedded rat brain using MAP1LC3A antibody (abx126115) at dilution of 1/100 (40x lens).



Immunohistochemistry of paraffin-embedded mouse testis using MAP1LC3A antibody (abx126115) at dilution of 1/100 (20x lens).



Immunohistochemistry of paraffin-embedded mouse spinal cord using MAP1LC3A antibody (abx126115) at dilution of 1/100 (40x lens).



Immunohistochemistry of paraffin-embedded mouse brain using MAP1LC3A antibody (abx126115) at dilution of 1/100 (40x lens).

Datasheet

Version: 2.0.0
Revision date: 25 Nov 2024



MAP1LC3A Antibody is a Rabbit Polyclonal against MAP1LC3A.

Target:	Microtubule-Associated Proteins 1A/1B Light Chain 3A (MAP1LC3A)
Clonality:	Polyclonal
Reactivity:	Mouse, Rat
Tested Applications:	WB, IHC
Host:	Rabbit
Recommended dilutions:	WB: 1/500 - 1/2000, IHC-P: 1/50 - 1/200. Not tested in IHC-F. Optimal dilutions/concentrations should be determined by the end user.
Conjugation:	Unconjugated
Immunogen:	A synthetic peptide corresponding to a sequence within amino acids 1-100 of human MAP1LC3A.
Isotype:	IgG
Form:	Liquid
Purification:	Purified by affinity chromatography.
Storage:	Aliquot and store at -20°C. Avoid repeated freeze/thaw cycles.
UniProt Primary AC:	Q9H492 (UniProt , ExPASy)
Gene Symbol:	MAP1LC3A
GeneID:	84557
NCBI Accession:	NP_115903.1
String:	9606.ENSP00000363970
Molecular Weight:	Calculated MW: 14 kDa Observed MW: 18 kDa
Buffer:	PBS, pH 7.3, containing 0.02% sodium azide, 50% glycerol.
Concentration:	> 0.2 mg/ml
Note:	This product is for research use only.