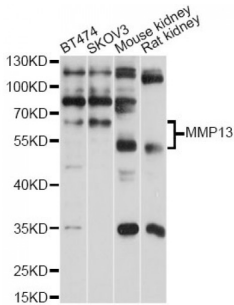


Matrix Metalloproteinase 13 (MMP13) Antibody

Catalogue No.: abx126168



Western blot analysis of extracts of various cell lines, using MMP13 antibody (abx126168) at 1/1000 dilution.

MMP13 Antibody is a Rabbit Polyclonal against MMP13.

Target:	Matrix Metalloproteinase 13 (MMP13)
Clonality:	Polyclonal
Reactivity:	Human, Mouse, Rat
Tested Applications:	WB, IF/ICC
Host:	Rabbit
Recommended dilutions:	WB: 1/1000 - 1/5000, IF/ICC: 1/50 - 1/200. Optimal dilutions/concentrations should be determined by the end user.
Conjugation:	Unconjugated
Immunogen:	Recombinant fusion protein containing a sequence corresponding to amino acids 262-471 of human MMP13.
Isotype:	IgG
Form:	Liquid
Purification:	Purified by affinity chromatography.
Storage:	Aliquot and store at -20°C. Avoid repeated freeze/thaw cycles.
UniProt Primary AC:	P45452 (UniProt , ExpASY)
Gene Symbol:	MMP13
GeneID:	4322

Datasheet

Version: 1.0.0
Revision date: 27 Jul 2024



NCBI Accession: NP_002418.1

KEGG: hsa:4322

String: [9606.ENSP00000260302](#)

Molecular Weight: Calculated MW: 54 kDa
Observed MW: 65-70 kDa

Buffer: PBS, pH 7.3, containing 0.01% thimerosal, 50% glycerol.

Concentration: > 0.2 mg/ml

Note: This product is for research use only.

For Reference Only