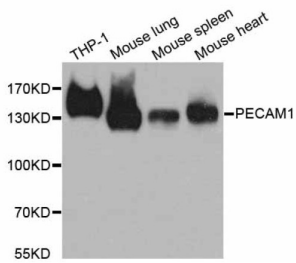
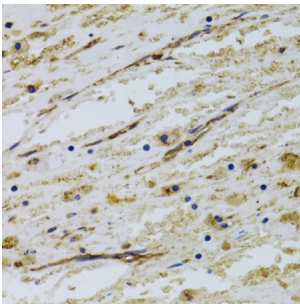


Platelet Endothelial Cell Adhesion Molecule (PECAM1) Antibody

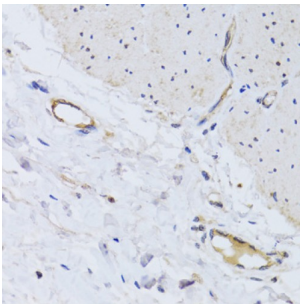
Catalogue No.: abx126348



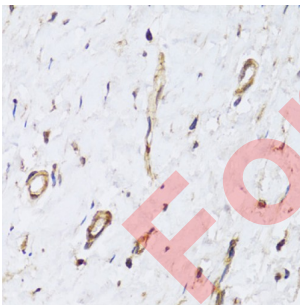
Western blot analysis of extracts of various cell lines, using PECAM1 antibody (abx126348) at 1/1000 dilution.



Immunohistochemistry of paraffin-embedded human liver cancer using PECAM1 antibody (abx126348) at dilution of 1/100 (40x lens).



Immunohistochemistry of paraffin-embedded human colon using PECAM1 antibody (abx126348) at dilution of 1/100 (40x lens).



Immunohistochemistry of paraffin-embedded human breast cancer using PECAM1 antibody (abx126348) at dilution of 1/100 (40x lens).

PECAM1 Antibody is a Rabbit Polyclonal against PECAM1.

Target: Platelet Endothelial Cell Adhesion Molecule (PECAM1)

Clonality: Polyclonal

Reactivity: Human, Mouse

Datasheet

Version: 2.0.0
Revision date: 22 Dec 2024



Tested Applications:	WB, IP
Host:	Rabbit
Recommended dilutions:	WB: 1/500 - 1/2000, IP: 1/50 - 1/200. Optimal dilutions/concentrations should be determined by the end user.
Conjugation:	Unconjugated
Immunogen:	A synthetic peptide corresponding to a sequence within amino acids 20-255 of human CD31/PECAM.
Isotype:	IgG
Form:	Liquid
Purification:	Purified by affinity chromatography.
Storage:	Aliquot and store at -20°C. Avoid repeated freeze/thaw cycles.
UniProt Primary AC:	P16284 (UniProt , ExpASY)
Gene Symbol:	PECAM1
GeneID:	5175
NCBI Accession:	NP_000433.4
KEGG:	hsa:5175
String:	9606.ENSP00000457421
Molecular Weight:	Calculated MW: 83 kDa Observed MW: 130 kDa
Buffer:	PBS, pH 7.3, containing 0.01% thimerosal, 50% glycerol.
Concentration:	> 0.2 mg/ml
Note:	This product is for research use only.