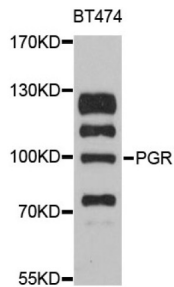


# Datasheet

Version: 4.0.0  
Revision date: 31 Dec 2024

## Progesterone Receptor (PGR) Antibody

Catalogue No.: abx126356



Western blot analysis of extracts of BT-474 cells, using PGR antibody (abx126356) at 1:3000 dilution.

PGR Antibody is a Rabbit Polyclonal against PGR.

<b>Target:</b>	Progesterone Receptor (PGR)
<b>Clonality:</b>	Polyclonal
<b>Reactivity:</b>	Human, Mouse, Rat
<b>Tested Applications:</b>	WB, IHC
<b>Host:</b>	Rabbit
<b>Recommended dilutions:</b>	WB: 1/500 - 1/1000, IHC-P: 1/50 - 1/200. Not tested in IHC-F. Optimal dilutions/concentrations should be determined by the end user.
<b>Conjugation:</b>	Unconjugated
<b>Immunogen:</b>	Recombinant fusion protein containing a sequence corresponding to amino acids 1-250 of human Progesterone Receptor.
<b>Isotype:</b>	IgG
<b>Form:</b>	Liquid
<b>Purification:</b>	Purified by affinity chromatography.
<b>Storage:</b>	Aliquot and store at -20°C. Avoid repeated freeze/thaw cycles.
<b>UniProt Primary AC:</b>	P06401 ( <a href="#">UniProt</a> , <a href="#">ExpASY</a> )
<b>Gene Symbol:</b>	PGR
<b>GeneID:</b>	<a href="#">5241</a>

# Datasheet

Version: 4.0.0  
Revision date: 31 Dec 2024



**NCBI Accession:** NP\_000917.3

**KEGG:** hsa:5241

**String:** [9606.ENSP00000325120](#)

**Molecular Weight:** Calculated MW: 99 kDa  
Observed MW: 118 kDa

**Buffer:** PBS, pH 7.3, containing 0.05% Proclin-300, 50% glycerol.

**Concentration:** > 0.2 mg/ml

**Note:** This product is for research use only.

For Reference Only