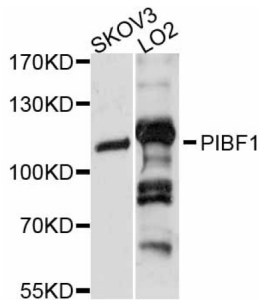


Datasheet

Version: 2.0.0
Revision date: 24 Dec 2024

Progesterone-Induced-Blocking Factor 1 (PIBF1) Antibody

Catalogue No.: abx126358



Western blot analysis of extracts of various cell lines, using PIBF1 antibody (abx126358) at 1:3000 dilution.

PIBF1 Antibody is a Rabbit Polyclonal against PIBF1.

Target:	Progesterone-Induced-Blocking Factor 1 (PIBF1)
Clonality:	Polyclonal
Reactivity:	Human
Tested Applications:	WB
Host:	Rabbit
Recommended dilutions:	WB: 1/500 - 1/2000. Optimal dilutions/concentrations should be determined by the end user.
Conjugation:	Unconjugated
Immunogen:	Recombinant fusion protein containing a sequence corresponding to amino acids 598-757 of human PIBF1.
Isotype:	IgG
Form:	Liquid
Purification:	Purified by affinity chromatography.
Storage:	Aliquot and store at -20°C. Avoid repeated freeze/thaw cycles.
UniProt Primary AC:	Q8WXW3 (UniProt , ExPASy)
Gene Symbol:	PIBF1
GeneID:	10464

Datasheet

Version: 2.0.0

Revision date: 24 Dec 2024

NCBI Accession: NP_006337.2

KEGG: hsa:10464

String: [9606.ENSP00000317144](#)

Molecular Weight: Calculated MW: 90 kDa
Observed MW: 110 kDa

Buffer: PBS, pH 7.3, containing 0.01% thimerosal, 50% glycerol.

Concentration: > 0.2 mg/ml

Note: This product is for research use only.

For Reference Only