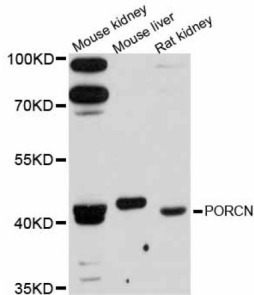


Probable Protein-Cysteine N-Palmitoyltransferase Porcupine (PORCN) Antibody

Catalogue No.: abx126396



Western blot analysis of extracts of various cell lines, using PORCN antibody (abx126396) at 1:3000 dilution.

PORCN Antibody is a Rabbit Polyclonal against PORCN.

Target:	Probable Protein-Cysteine N-Palmitoyltransferase Porcupine (PORCN)
Clonality:	Polyclonal
Reactivity:	Mouse, Rat
Tested Applications:	WB
Host:	Rabbit
Recommended dilutions:	WB: 1/500 - 1/1000. Optimal dilutions/concentrations should be determined by the end user.
Conjugation:	Unconjugated
Immunogen:	Recombinant fusion protein containing a sequence corresponding to amino acids 220-320 of human PORCN.
Isotype:	IgG
Form:	Liquid
Purification:	Purified by affinity chromatography.
Storage:	Aliquot and store at -20°C. Avoid repeated freeze/thaw cycles.
UniProt Primary AC:	Q9H237 (UniProt , ExPASy)
Gene Symbol:	PORCN

Datasheet

Version: 3.0.0
Revision date: 25 Dec 2024

GeneID: [64840](#)

NCBI Accession: NP_982299.1

String: [9606.ENSP00000322304](#)

Molecular Weight: Calculated MW: 52 kDa
Observed MW: 52 kDa

Buffer: PBS, pH 7.3, containing 0.01% thimerosal, 50% glycerol.

Concentration: > 0.2 mg/ml

Note: This product is for research use only.

For Reference Only