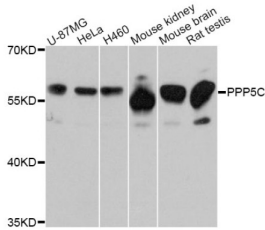


# Datasheet

Version: 1.0.0  
Revision date: 15 Nov 2024

## Protein Phosphatase 5 Catalytic Subunit (PPP5C) Antibody

Catalogue No.: abx126407



Western blot analysis of extracts of various cell lines, using PPP5C Antibody (abx126407) at 1:3000 dilution.

PPP5C Antibody is a Rabbit Polyclonal against PPP5C.

<b>Target:</b>	Protein Phosphatase 5 Catalytic Subunit (PPP5C)
<b>Clonality:</b>	Polyclonal
<b>Reactivity:</b>	Human, Mouse, Rat
<b>Tested Applications:</b>	WB, IF/ICC
<b>Host:</b>	Rabbit
<b>Recommended dilutions:</b>	WB: 1/500 - 1/2000, IF/ICC: 1/50 - 1/200. Optimal dilutions/concentrations should be determined by the end user.
<b>Conjugation:</b>	Unconjugated
<b>Immunogen:</b>	Recombinant fusion protein containing a sequence corresponding to amino acids 1-210 of human PPP5C.
<b>Isotype:</b>	IgG
<b>Form:</b>	Liquid
<b>Purification:</b>	Purified by affinity chromatography.
<b>Storage:</b>	Aliquot and store at -20°C. Avoid repeated freeze/thaw cycles.
<b>UniProt Primary AC:</b>	P53041 ( <a href="#">UniProt</a> , <a href="#">ExpASY</a> )
<b>Gene Symbol:</b>	PPP5C
<b>GeneID:</b>	<a href="#">5536</a>

# Datasheet

Version: 1.0.0  
Revision date: 15 Nov 2024



**NCBI Accession:** NP\_006238.1

**KEGG:** hsa:5536

**String:** [9606.ENSP00000012443](#)

**Molecular Weight:** Calculated MW: 57 kDa  
Observed MW: 57 kDa

**Buffer:** PBS, pH 7.3, containing 0.01% thimerosal, 50% glycerol.

**Concentration:** > 0.2 mg/ml

**Note:** This product is for research use only.

For Reference Only