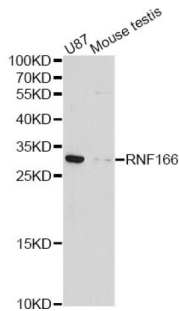


Datasheet

Version: 1.0.0
Revision date: 22 Nov 2024

RING Finger Protein 166 (RNF166) Antibody

Catalogue No.: abx127035



Western blot analysis of extracts of various cell lines, using RNF166 antibody (abx127035) at 1/1000 dilution.

RNF166 Antibody is a Rabbit Polyclonal against RNF166.

Target:	RING Finger Protein 166 (RNF166)
Clonality:	Polyclonal
Reactivity:	Human, Mouse
Tested Applications:	WB, IF/ICC
Host:	Rabbit
Recommended dilutions:	WB: 1/500 - 1/1000, IF/ICC: 1/20 - 1/50. Optimal dilutions/concentrations should be determined by the end user.
Conjugation:	Unconjugated
Immunogen:	Recombinant fusion protein containing a sequence corresponding to amino acids 1-237 of human RNF166.
Isotype:	IgG
Form:	Liquid
Purification:	Purified by affinity chromatography.
Storage:	Aliquot and store at -20°C. Avoid repeated freeze/thaw cycles.
UniProt Primary AC:	Q96A37 (UniProt , ExpASY)
Gene Symbol:	RNF166
GeneID:	115992

Datasheet

Version: 1.0.0
Revision date: 22 Nov 2024



NCBI Accession: NP_849163.1

KEGG: hsa:115992

String: [9606.ENSP00000326095](#)

Molecular Weight: Calculated MW: 26 kDa
Observed MW: 26 kDa

Buffer: PBS, pH 7.3, containing 0.02% sodium azide, 50% glycerol.

Concentration: > 0.2 mg/ml

Note: This product is for research use only.

For Reference Only