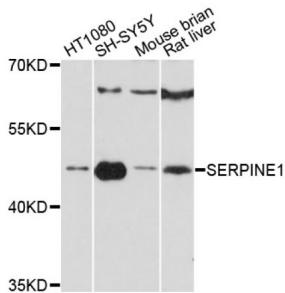


Datasheet

Version: 2.0.0
Revision date: 18 Oct 2024

Serpin Family E Member 1 (SERPINE1) Antibody

Catalogue No.: abx126530



Western blot analysis of extracts of various cell lines, using SERPINE1 antibody (abx126530) at 1:3000 dilution.

SERPINE1 Antibody is a Rabbit Polyclonal against SERPINE1.

Target:	Serpin Family E Member 1 (SERPINE1)
Clonality:	Polyclonal
Reactivity:	Human, Mouse, Rat
Tested Applications:	WB
Host:	Rabbit
Recommended dilutions:	WB: 1/500 - 1/2000. Optimal dilutions/concentrations should be determined by the end user.
Conjugation:	Unconjugated
Immunogen:	Recombinant fusion protein containing a sequence corresponding to amino acids 24-158 of human PAI-1/Serpin E1.
Isotype:	IgG
Form:	Liquid
Purification:	Purified by affinity chromatography.
Storage:	Aliquot and store at -20°C. Avoid repeated freeze/thaw cycles.
UniProt Primary AC:	P05121 (UniProt , ExPASy)
Gene Symbol:	SERPINE1
GeneID:	5054

Datasheet

Version: 2.0.0
Revision date: 18 Oct 2024



NCBI Accession: NP_000593.1

KEGG: hsa:5054

String: [9606.ENSP00000223095](#)

Molecular Weight: Calculated MW: 45 kDa
Observed MW: 45 kDa

Buffer: PBS, pH 7.3, containing 0.01% thimerosal, 50% glycerol.

Concentration: > 0.2 mg/ml

Note: This product is for research use only.

For Reference Only