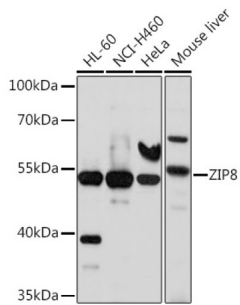
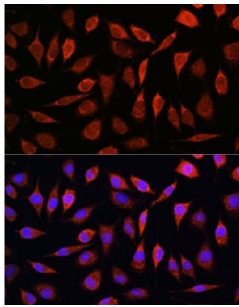


Solute Carrier Family 39, Member 8 (SLC39A8) Antibody

Catalogue No.: abx126582



Western blot analysis of extracts of various cell lines using ZIP8 Antibody (1/1000 dilution).



Immunofluorescence analysis of L929 cells using ZIP8 Antibody (1/100 dilution). Blue: DAPI for nuclear staining.

SLC39A8 Antibody is a Rabbit Polyclonal against SLC39A8.

Target:	Solute Carrier Family 39, Member 8 (SLC39A8)
Clonality:	Polyclonal
Reactivity:	Human, Mouse
Tested Applications:	WB, IF/ICC
Host:	Rabbit
Recommended dilutions:	WB: 1/500 - 1/2000, IF/ICC: 1/50 - 1/200. Optimal dilutions/concentrations should be determined by the end user.
Conjugation:	Unconjugated
Immunogen:	Recombinant fusion protein corresponding to human ZIP8
Isotype:	IgG
Form:	Liquid
Purification:	Purified by affinity chromatography.

Datasheet

Version: 2.0.0
Revision date: 02 Feb 2025



Storage: Aliquot and store at -20°C. Avoid repeated freeze/thaw cycles.

UniProt Primary AC: Q9C0K1 ([UniProt](#), [ExPASy](#))

Gene Symbol: SLC39A8

GeneID: [64116](#)

NCBI Accession: NP_071437.3

String: [9606.ENSP00000378310](#)

Molecular Weight: Calculated MW: 43 kDa/48 kDa/49 kDa
Observed MW: 50 kDa

Buffer: PBS, pH 7.3, containing 0.02% sodium azide, 50% glycerol.

Concentration: 1 mg/ml

Note: This product is for research use only.

For Reference Only