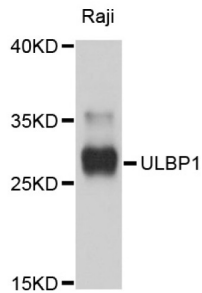


# Datasheet

Version: 2.0.0  
Revision date: 15 Jan 2025

## UL16 Binding Protein 1 (ULBP1) Antibody

Catalogue No.: abx126761



Western blot analysis of extracts of Raji cells, using ULBP1 antibody (abx126761) at 1/1000 dilution.

ULBP1 Antibody is a Rabbit Polyclonal against ULBP1.

<b>Target:</b>	UL16 Binding Protein 1 (ULBP1)
<b>Clonality:</b>	Polyclonal
<b>Reactivity:</b>	Human, Mouse
<b>Tested Applications:</b>	WB, IHC
<b>Host:</b>	Rabbit
<b>Recommended dilutions:</b>	WB: 1/1000 - 1/2000, IHC-P: 1/100 - 1/500. Not tested in IHC-F. Optimal dilutions/concentrations should be determined by the end user.
<b>Conjugation:</b>	Unconjugated
<b>Immunogen:</b>	Recombinant fusion protein containing a sequence corresponding to amino acids 26-216 of human ULBP1.
<b>Isotype:</b>	IgG
<b>Form:</b>	Liquid
<b>Purification:</b>	Purified by affinity chromatography.
<b>Storage:</b>	Aliquot and store at -20°C. Avoid repeated freeze/thaw cycles.
<b>UniProt Primary AC:</b>	Q9BZM6 ( <a href="#">UniProt</a> , <a href="#">ExPASy</a> )
<b>Gene Symbol:</b>	ULBP1
<b>GeneID:</b>	<a href="#">80329</a>

# Datasheet

Version: 2.0.0  
Revision date: 15 Jan 2025



**NCBI Accession:** NP\_079494.1

**String:** [9606.ENSP00000229708](#)

**Molecular Weight:** Calculated MW: 28 kDa  
Observed MW: 28 kDa

**Buffer:** PBS, pH 7.3, containing 0.02% sodium azide, 50% glycerol.

**Concentration:** > 0.2 mg/ml

**Note:** This product is for research use only.

For Reference Only