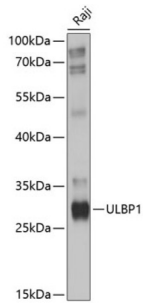
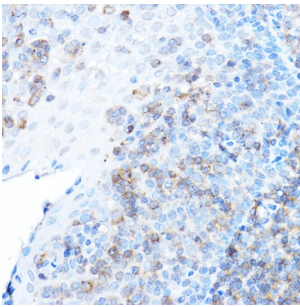


UL16 Binding Protein 1 (ULBP1) Antibody

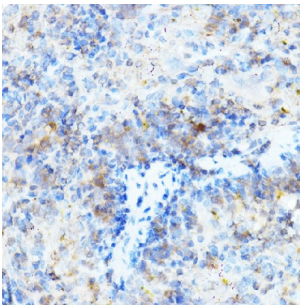
Catalogue No.: abx126761



Western blot analysis of extracts of Raji cells using ULBP1 Antibody (1/1000 dilution).



Immunohistochemistry of paraffin-embedded human tonsil using ULBP1 Antibody (1/50 dilution) (40x lens). High pressure antigen retrieval was performed in 10 mM citrate buffer pH 6.0 before commencing with IHC staining protocol.



Immunohistochemistry of paraffin-embedded mouse spleen using ULBP1 Antibody (1/50 dilution) (40x lens). High pressure antigen retrieval was performed in 10 mM citrate buffer pH 6.0 before commencing with IHC staining protocol.

ULBP1 Antibody is a Rabbit Polyclonal against ULBP1.

Target: UL16 Binding Protein 1 (ULBP1)

Clonality: Polyclonal

Reactivity: Human, Mouse

Tested Applications: WB, IHC

Host: Rabbit

Recommended dilutions: WB: 1/1000 - 1/2000, IHC-P: 1/50 - 1/200. Not tested in IHC-F. Optimal dilutions/concentrations should be determined by the end user.

Conjugation: Unconjugated

Datasheet

Version: 3.0.0
Revision date: 23 Feb 2025



Immunogen:	Recombinant fusion protein corresponding to human ULBP1
Isotype:	IgG
Form:	Liquid
Purification:	Purified by affinity chromatography.
Storage:	Aliquot and store at -20°C. Avoid repeated freeze/thaw cycles.
UniProt Primary AC:	Q9BZM6 (UniProt , ExPASy)
Gene Symbol:	ULBP1
GeneID:	80329
NCBI Accession:	NP_079494.1
String:	9606.ENSP00000229708
Molecular Weight:	Calculated MW: 27 kDa Observed MW: 28 kDa
Buffer:	PBS, pH 7.3, containing 0.02% sodium azide, 50% glycerol.
Concentration:	1 mg/ml
Note:	This product is for research use only.

For Reference Only