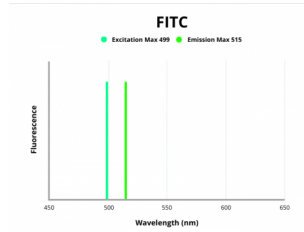


## Actin-Related Protein 8 (ACTR8) Antibody (FITC)

Catalogue No.: abx311204



Fluorescence emission spectra of FITC.

ACTR8 Antibody (FITC) is a Rabbit Polyclonal against ACTR8 conjugated to FITC.

<b>Target:</b>	Actin-Related Protein 8 (ACTR8)
<b>Clonality:</b>	Polyclonal
<b>Reactivity:</b>	Human
<b>Host:</b>	Rabbit
<b>Recommended dilutions:</b>	Optimal dilutions/concentrations should be determined by the end user.
<b>Conjugation:</b>	FITC
<b>Excitation/Emission:</b>	499/515
<b>Laser Line:</b>	488
<b>Immunogen:</b>	Recombinant human Actin-related protein 8 protein (35-175 AA).
<b>Isotype:</b>	IgG
<b>Form:</b>	Liquid
<b>Purity:</b>	> 95%
<b>Purification:</b>	Purified by Protein G.
<b>Storage:</b>	Aliquot and store at -20°C. Avoid exposure to light. Avoid repeated freeze/thaw cycles.
<b>UniProt Primary AC:</b>	Q9H981 ( <a href="#">UniProt</a> , <a href="#">ExPASy</a> )

# Datasheet

Version: 2.0.0  
Revision date: 20 Mar 2024



**Gene Symbol:** ACTR8

**GeneID:** [93973](#)

**NCBI Accession:** NP\_075050.3, NM\_022899.4

**KEGG:** hsa:93973

**Buffer:** 0.01 M PBS, pH 7.4, 0.03% Proclin-300 and 50% Glycerol.

**Note:** This product is for research use only.

For Reference Only