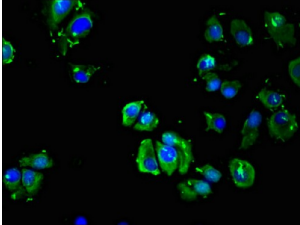


## Adrenergic Receptor Beta 3 (ADRB3) Antibody

Catalogue No.: abx301047



Immunofluorescence analysis of MCF-7 cells using ADRB3 antibody (1/100 dilution).

ADRB3 Antibody is a Rabbit Polyclonal against ADRB3.

<b>Target:</b>	Adrenergic Receptor Beta 3 (ADRB3)
<b>Clonality:</b>	Polyclonal
<b>Reactivity:</b>	Human
<b>Tested Applications:</b>	ELISA, IF/ICC
<b>Host:</b>	Rabbit
<b>Recommended dilutions:</b>	IF/ICC: 1/50 - 1/200. Optimal dilutions/concentrations should be determined by the end user.
<b>Conjugation:</b>	Unconjugated
<b>Immunogen:</b>	Recombinant human Beta-3 adrenergic receptor protein (1-36 AA).
<b>Isotype:</b>	IgG
<b>Form:</b>	Liquid
<b>Purity:</b>	> 95%
<b>Purification:</b>	Purified by Protein G.
<b>Storage:</b>	Aliquot and store at -20°C. Avoid repeated freeze/thaw cycles.
<b>UniProt Primary AC:</b>	P13945 ( <a href="#">UniProt</a> , <a href="#">ExPASy</a> )
<b>Gene Symbol:</b>	ADRB3

# Datasheet

Version: 3.0.0  
Revision date: 11 Mar 2025



**GeneID:** [155](#)

**OMIM:** [109691](#)

**KEGG:** hsa:155

**String:** [9606.ENSP00000343782](#)

**Buffer:** 0.01 M PBS, pH 7.4, 0.03% Proclin-300 and 50% Glycerol.

**Concentration:** 5 mg/ml

**Note:** THIS PRODUCT IS FOR RESEARCH USE ONLY. NOT FOR USE IN DIAGNOSTIC, THERAPEUTIC OR COSMETIC PROCEDURES. NOT FOR HUMAN OR ANIMAL CONSUMPTION.

For Reference Only