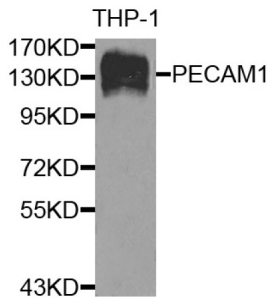
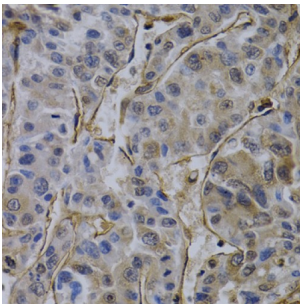


Platelet And Endothelial Cell Adhesion Molecule 1 (PECAM1) Antibody

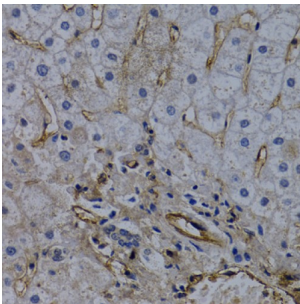
Catalogue No.: abx001716



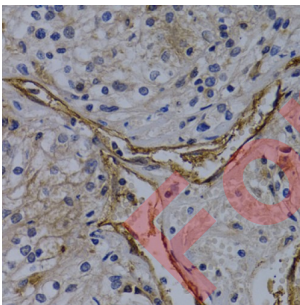
Western blot analysis of extracts of THP-1 cells, using PECAM1 antibody (abx001716) at 1/500 dilution.



Immunohistochemistry of paraffin-embedded human liver cancer using PECAM1 antibody (abx001716) at dilution of 1/100 (40x lens).



Immunohistochemistry of paraffin-embedded human liver injury using PECAM1 antibody (abx001716) at dilution of 1/100 (40x lens).



Immunohistochemistry of paraffin-embedded human kidney injury using PECAM1 antibody (abx001716) at dilution of 1/100 (40x lens).

CD31 Antibody is a Rabbit Polyclonal antibody against CD31. The protein encoded by this gene is found on the surface of platelets, monocytes, neutrophils, and some types of T-cells, and makes up a large portion of endothelial cell intercellular junctions. The encoded protein is a member of the immunoglobulin superfamily and is likely involved in leukocyte migration, angiogenesis, and integrin activation.

Target: Platelet And Endothelial Cell Adhesion Molecule 1 (PECAM1)

Clonality: Polyclonal

Datasheet

Version: 2.0.0
Revision date: 02 Dec 2024



Reactivity:	Human
Tested Applications:	WB, IF/ICC
Host:	Rabbit
Recommended dilutions:	WB: 1/500 - 1/1000, IF/ICC: 1/50 - 1/200. Optimal dilutions/concentrations should be determined by the end user.
Conjugation:	Unconjugated
Immunogen:	Recombinant fusion protein containing a sequence corresponding to amino acids 630-738 of CD31/PECAM1.
Isotype:	IgG
Form:	Liquid
Purification:	Purified by affinity chromatography.
Storage:	Aliquot and store at -20°C. Avoid repeated freeze/thaw cycles.
UniProt Primary AC:	P16284 (UniProt , ExPASy)
Gene Symbol:	PECAM1
GeneID:	5175
NCBI Accession:	NP_000433.4
KEGG:	hsa:5175
String:	9606.ENSP00000457421
Molecular Weight:	Calculated MW: 83 kDa Observed MW: 130 kDa
Buffer:	PBS, pH 7.3, containing 0.05% Proclin-300, 50% glycerol.
Concentration:	> 0.2 mg/ml
Note:	This product is for research use only.