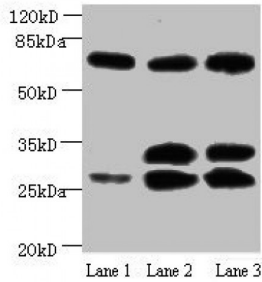


Beta-Amyloid Precursor Protein (APP) Antibody

Catalogue No.: abx210155



Western blot

All lanes: Amyloid beta A4 antibody at 1 µg/ml

Lane 1: Mouse heart tissue

Lane 2: Mouse kidney tissue

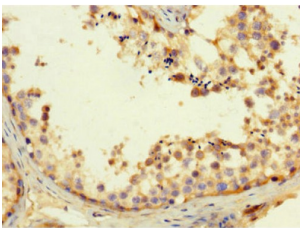
Lane 3: Mouse lung tissue

Secondary

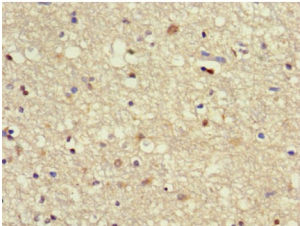
Goat polyclonal to Rabbit IgG at 1/15000 dilution

Predicted band size: 30,35,72,80 kDa

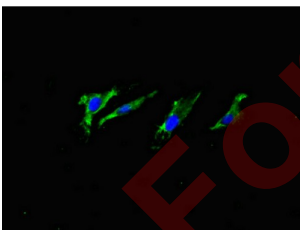
Observed band size: 30,35,72 kDa



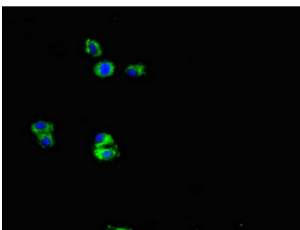
Immunohistochemistry of paraffin-embedded human testis tissue using APP Antibody at dilution of 1/100.



Immunohistochemistry of paraffin-embedded human brain tissue using APP Antibody at dilution of 1/100.



Immunofluorescent analysis of HeLa cells using APP Antibody at a dilution of 1/100 and AF488-conjugated AffiniPure Goat Anti-Rabbit IgG (H+L).



Immunofluorescent analysis of HepG2 cells using APP Antibody at a dilution of 1: 100 and AF488-conjugated AffiniPure Goat Anti-Rabbit IgG(H+L)

Datasheet

Version: 2.0.0
Revision date: 17 Jul 2024



APP Antibody is a Mouse Monoclonal against APP.

Target:	Beta-Amyloid Precursor Protein (APP)
Clonality:	Monoclonal
Reactivity:	Human, Mouse
Tested Applications:	ELISA, WB, IHC, IF/ICC
Host:	Mouse
Recommended dilutions:	WB: 1/500 - 1/5000, IHC: 1/50 - 1/500, IF/ICC: 1/50 - 1/200. Optimal dilutions/concentrations should be determined by the end user.
Conjugation:	Unconjugated
Immunogen:	Recombinant Human APP Protein.
Form:	Liquid
Purity:	> 95%
Purification:	Purified by Protein G.
Storage:	Aliquot and store at -20°C. Avoid repeated freeze/thaw cycles.
UniProt Primary AC:	P05067 (UniProt , ExPASy)
GeneID:	351
OMIM:	104300
NCBI Accession:	NP_000475.1, NM_000484.3
Buffer:	0.01 M PBS, pH 7.4, 0.03% Proclin 300 and 50% glycerol.
Specificity:	Specific for human app denatured and native forms.
Note:	This product is for research use only.