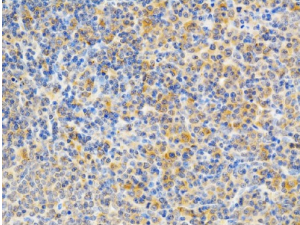
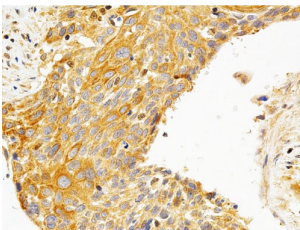


Protein Kinase C Epsilon (PRKCE) Antibody

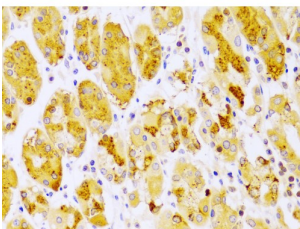
Catalogue No.: abx001722



Immunohistochemistry of paraffin-embedded Rat spleen using PRKCE Antibody (1/200 dilution, 40x lens).



Immunohistochemistry of paraffin-embedded Human esophageal cancer using PRKCE Antibody (1/200 dilution, 40x lens).



Immunohistochemistry of paraffin-embedded Human stomach using PRKCE Antibody (1/100 dilution, 40x lens).

PRKCE Antibody is a Rabbit Polyclonal antibody against PRKCE. Protein kinase C (PKC) is a family of serine- and threonine-specific protein kinases that can be activated by calcium and the second messenger diacylglycerol. PKC family members phosphorylate a wide variety of protein targets and are known to be involved in diverse cellular signaling pathways. PKC family members also serve as major receptors for phorbol esters, a class of tumor promoters. Each member of the PKC family has a specific expression profile and is believed to play a distinct role in cells. The protein encoded by this gene is one of the PKC family members. This kinase has been shown to be involved in many different cellular functions, such as neuron channel activation, apoptosis, cardioprotection from ischemia, heat shock response, as well as insulin exocytosis. Knockout studies in mice suggest that this kinase is important for lipopolysaccharide (LPS)-mediated signaling in activated macrophages and may also play a role in controlling anxiety-like behavior.

Target: Protein Kinase C Epsilon (PRKCE)

Clonality: Polyclonal

Reactivity: Human, Mouse, Rat

Tested Applications: IHC

Datasheet

Version: 7.0.0
Revision date: 04 Apr 2025



Host:	Rabbit
Recommended dilutions:	IHC-P: 1/50 - 1/200. Not tested in IHC-F. Optimal dilutions/concentrations should be determined by the end user.
Conjugation:	Unconjugated
Immunogen:	Recombinant fusion protein corresponding to human PRKCE
Isotype:	IgG
Form:	Liquid
Purification:	Purified by affinity chromatography.
Storage:	Aliquot and store at -20°C. Avoid repeated freeze/thaw cycles.
UniProt Primary AC:	Q02156 (UniProt , ExPASy)
Gene Symbol:	PRKCE
GeneID:	5581
NCBI Accession:	NP_005391.1
KEGG:	hsa:5581
String:	9606.ENSP00000306124
Buffer:	PBS, pH 7.3, containing 0.02% sodium azide, 50% glycerol.
Concentration:	1 mg/ml
Note:	THIS PRODUCT IS FOR RESEARCH USE ONLY. NOT FOR USE IN DIAGNOSTIC, THERAPEUTIC OR COSMETIC PROCEDURES. NOT FOR HUMAN OR ANIMAL CONSUMPTION.