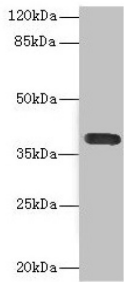
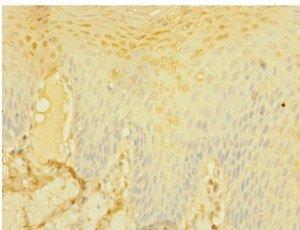


## Cluster of Differentiation 226 (CD226) Antibody

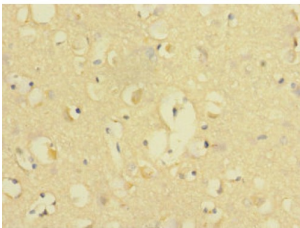
Catalogue No.: abx322654



WB analysis of A549 cell lysates, using CD226 antibody (2.61 µg/ml). Predicted band size: 39 kDa. Observed band size: 39 kDa.



IHC-P analysis of human tonsil tissue, using CD226 antibody (1/100 dilution).



IHC-P analysis of human brain tissue, using CD226 antibody (1/100 dilution).

CD226 Antibody is a Rabbit Polyclonal against CD226.

**Target:** Cluster of Differentiation 226 (CD226)

**Clonality:** Polyclonal

**Reactivity:** Human

**Tested Applications:** ELISA, WB, IHC

**Host:** Rabbit

**Recommended dilutions:** WB: 1/1000 - 1/5000, IHC: 1/20 - 1/200. Optimal dilutions/concentrations should be determined by the end user.

**Conjugation:** Unconjugated

# Datasheet

Version: 1.0.0  
Revision date: 15 Jan 2025



|                            |  |
|----------------------------|--|
| <b>Immunogen:</b>          | Recombinant human CD226 antigen protein (19-254 AA).           |
| <b>Isotype:</b>            | IgG  |
| <b>Form:</b>               | Liquid   |
| <b>Purification:</b>       | Antigen Affinity Chromatography.                               |
| <b>Storage:</b>            | Aliquot and store at -20°C. Avoid repeated freeze/thaw cycles. |
| <b>UniProt Primary AC:</b> | Q15762 ( <a href="#">UniProt</a> , <a href="#">ExPASy</a> )    |
| <b>Gene Symbol:</b>        | CD226  |
| <b>GeneID:</b>             | <a href="#">10666</a>  |
| <b>OMIM:</b>               | <a href="#">605397</a>   |
| <b>KEGG:</b>               | hsa:10666  |
| <b>String:</b>             | <a href="#">9606.ENSP00000280200</a>                           |
| <b>Buffer:</b>             | PBS, pH 7.3, containing 0.02% sodium azide and 50% glycerol.   |
| <b>Note:</b>               | This product is for research use only.                         |

For Reference Only