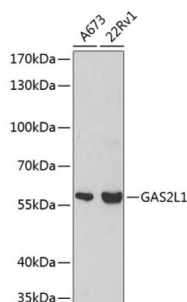


GAS2-Like Protein 1 (GAS2L1) Antibody

Catalogue No.: abx001755



Western blot analysis of various lysates using GAS2L1 Antibody at 1/500 dilution. Secondary antibody: HRP-conjugated Goat anti-Rabbit IgG (H+L) at 1/10000 dilution. Lysates/proteins: 25 µg per lane. Blocking buffer: 3% nonfat dry milk in TBST.

GAS2L1 Antibody is a Rabbit Polyclonal antibody against GAS2L1. The protein encoded by this gene, a member of the GAS2 family, is similar in sequence to the mouse protein Gas2, an actin-associated protein expressed at high levels in growth-arrested cells. Expression of the mouse Gas2 gene is negatively regulated by serum and growth factors. Three transcript variants encoding two different isoforms have been found for this gene. [provided by RefSeq, Jul 2008].

Target:	GAS2-Like Protein 1 (GAS2L1)
Clonality:	Polyclonal
Reactivity:	Human
Tested Applications:	ELISA, WB
Host:	Rabbit
Recommended dilutions:	ELISA: 1 µg/ml, WB: 1/500 - 1/2000. Optimal dilutions/concentrations should be determined by the end user.
Conjugation:	Unconjugated
Immunogen:	Recombinant fusion protein containing a sequence corresponding to amino acids 130-400 of human GAS2L1.
Isotype:	IgG
Form:	Liquid
Purification:	Purified by affinity chromatography.
Storage:	Aliquot and store at -20°C. Avoid repeated freeze/thaw cycles.
UniProt Primary AC:	Q99501 (UniProt , ExPASy)
Gene Symbol:	GAS2L1

Datasheet

Version: 3.0.0

Revision date: 27 Apr 2025



GeneID: [10634](#)

NCBI Accession: NP_006469.2

KEGG: hsa:10634

String: [9606.ENSP00000481012](#)

Molecular Weight: Calculated MW: 73 kDa
Observed MW: 58 kDa

Buffer: PBS, pH 7.3, containing 0.02% sodium azide, 50% glycerol.

Concentration: > 0.2 mg/ml

Note: THIS PRODUCT IS FOR RESEARCH USE ONLY. NOT FOR USE IN DIAGNOSTIC, THERAPEUTIC OR COSMETIC PROCEDURES. NOT FOR HUMAN OR ANIMAL CONSUMPTION.

For Reference Only